

FS-REVIVE Insert compatible with Revive® including the Call of the Abyss® expansion



Assembly Instructions

The package contains four sheets: 4 single sheets.

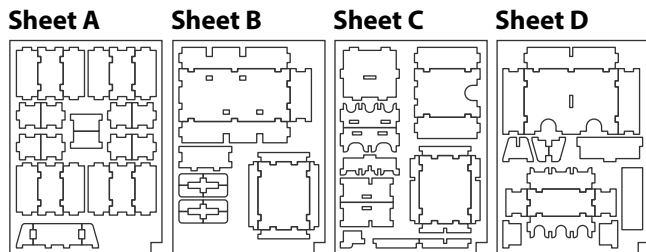
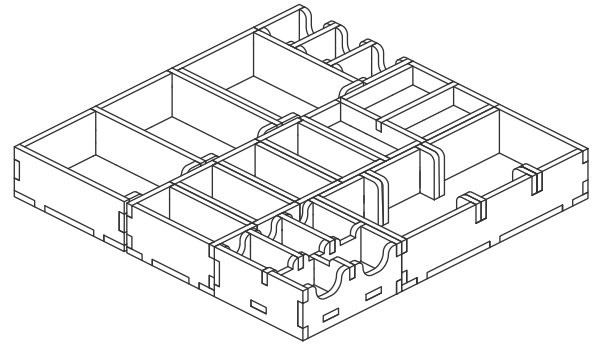
After assembly the trays are put in up to two layers in the original game box.

Ordinary PVA glue is required when assembling each tray.

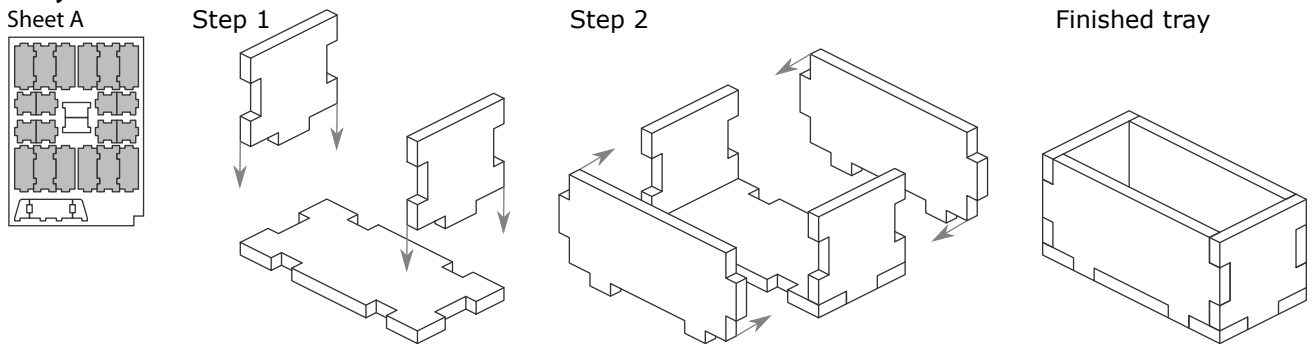
Please make sure you dry-assemble each tray correctly before gluing it together.

Please check www.foldedspace.com for general assembly tips.

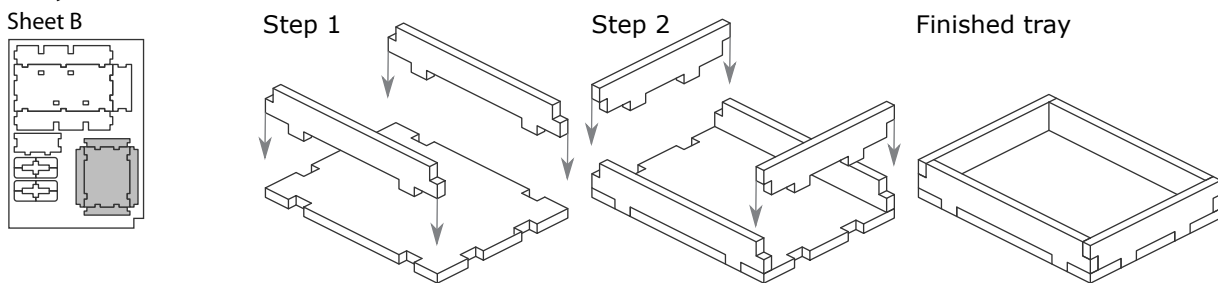
FS-REVIVE



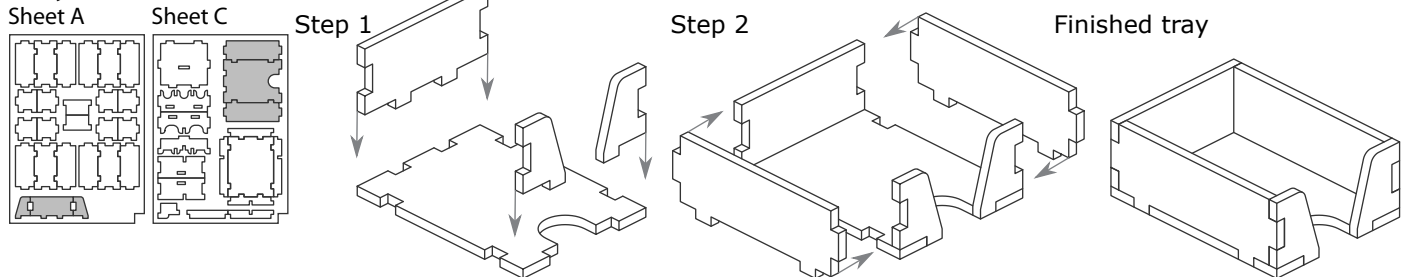
Tray 1a, 1b, 1c, 1d (the trays are identical)



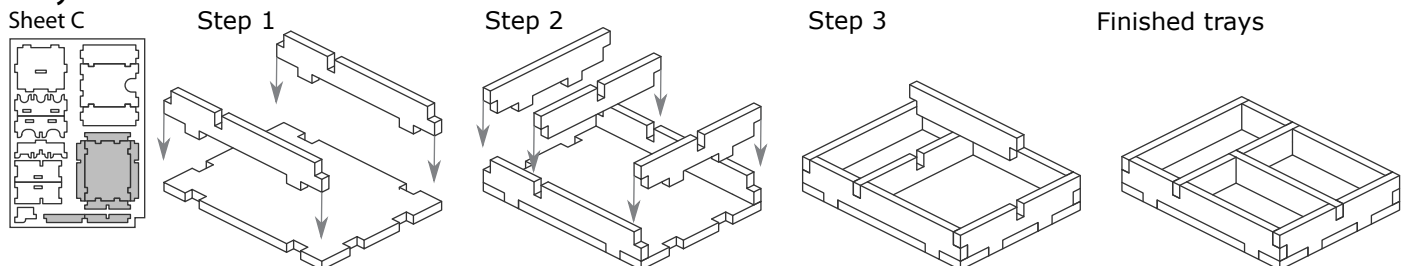
Tray 2



Tray 3



Tray 4

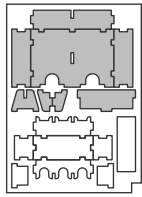


FS-REVIVE Insert compatible with Revive® including the Call of the Abyss® expansion

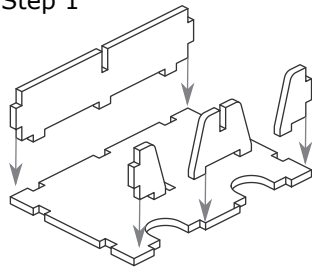


Tray 5

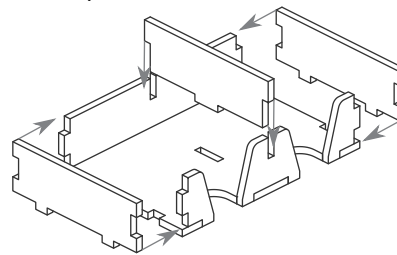
Sheet D



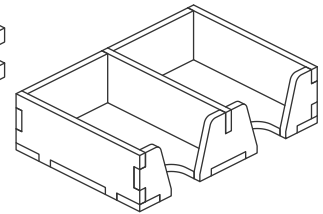
Step 1



Step 2

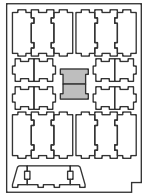


Finished tray

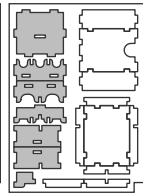


Tray 6

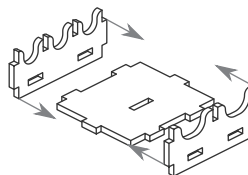
Sheet A



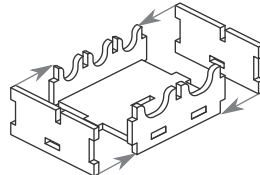
Sheet C



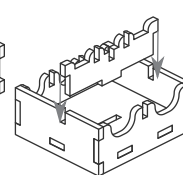
Step 1



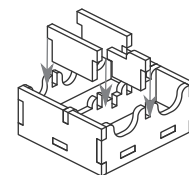
Step 2



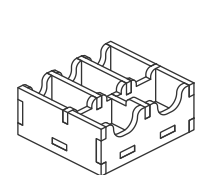
Step 3



Step 4

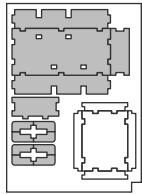


Finished tray

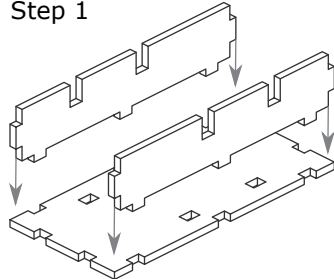


Tray 7

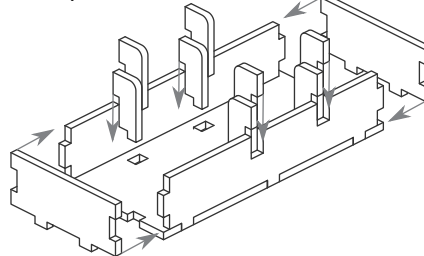
Sheet B



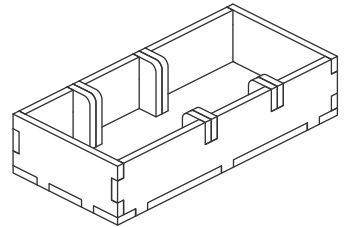
Step 1



Step 2

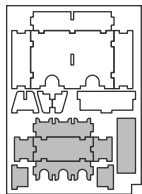


Finished tray

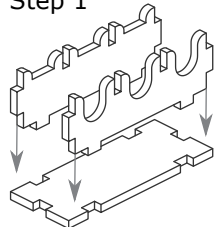


Tray 8

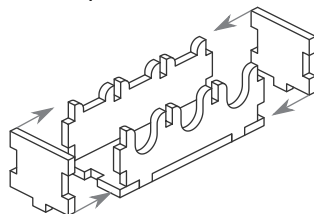
Sheet D



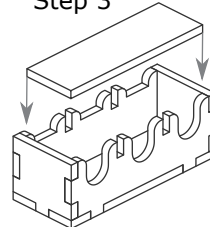
Step 1



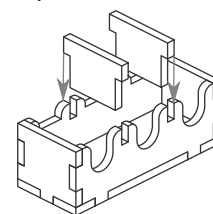
Step 2



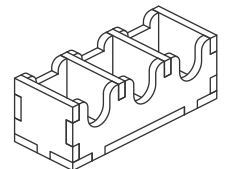
Step 3



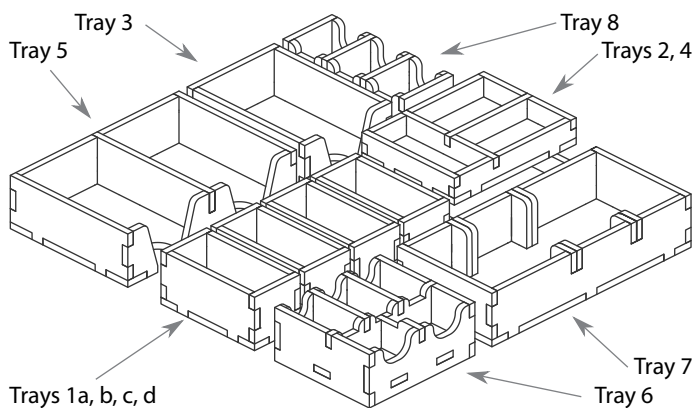
Step 4



Finished tray



FS-REVIVE



Please check www.foldedspace.com for photos of this insert in use.

Tray legend

- Tray 1a, b, c, d - player pieces, including machine track, progress & resource markers, and one switch token
- Tray 2 - tribe specific tokens and the two action cubes
- Tray 3 - campaign deck
- Tray 4 - energy markers, major artifact tiles and minor artifact tiles & end game tile
- Tray 5 - starting citizen & other cards and citizen card deck
- Tray 6 - slot module and crate tokens
- Tray 7 - area and large location tiles
- Tray 8 - machine tokens

Note: the Call of the Abyss expansion tokens will fit in the relevant trays, except for the ostarius tribe's gate tiles which need to be added to Tray 7. This will mean less room for the large location tiles, which will need to be placed on top of the boards adjacent to the tribe boards. The additional tribe boards and the devotion track will add roughly 5mm of lid lift.