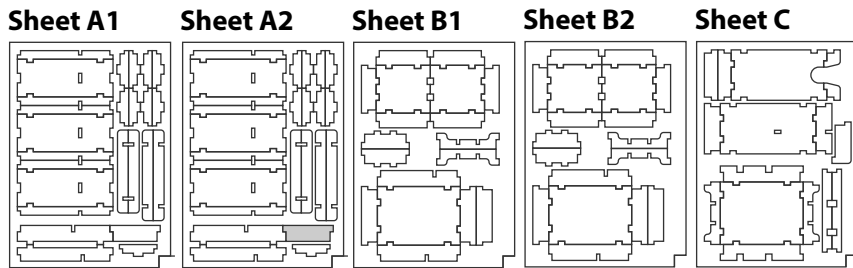
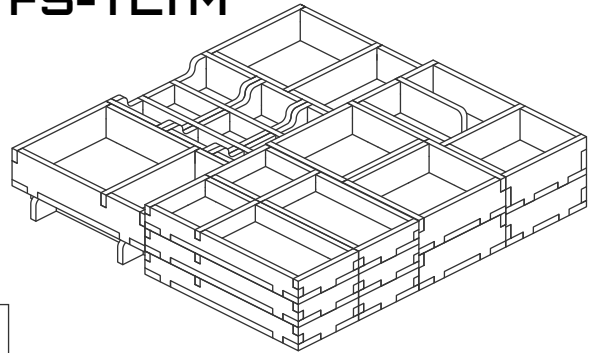


## Assembly Instructions

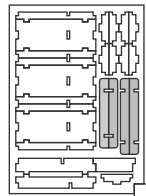
The package contains five sheets: two double sheets and one single sheet.  
 After assembly the trays are put in up to three layers in the original game box.  
 The piece marked in grey on Sheet A2 should be discarded.  
 Ordinary PVA glue is required when assembling each tray.  
 Please make sure you dry-assemble each tray correctly before gluing it together.  
 Please check [www.foldedspace.com](http://www.foldedspace.com) for general assembly tips.

## FS-TLTM



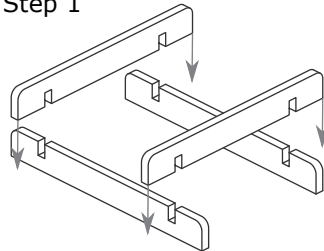
### Trays 1a, 1b

Sheet A1, A2

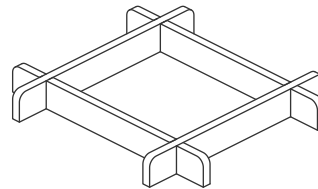


(the trays are identical)

Step 1

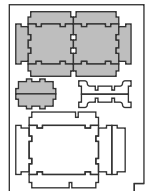


Finished tray



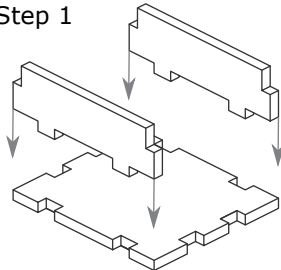
### Tray 2a, 2b, 2c, 2d

Sheet B1, B2

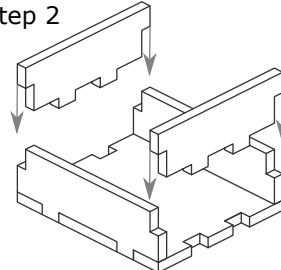


(the trays are identical)

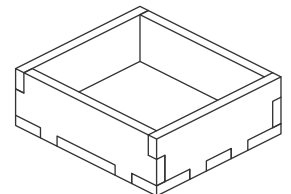
Step 1



Step 2

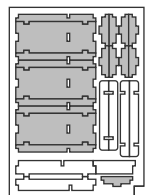


Finished tray



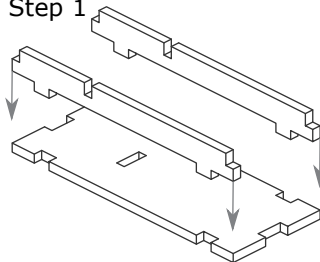
### Tray 3a-3f

Sheet A1, A2

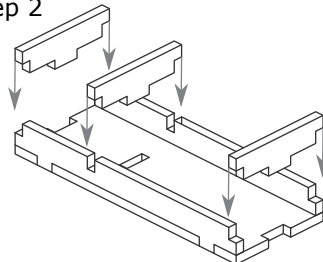


(the trays are identical)

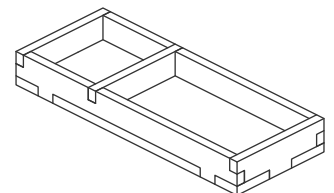
Step 1



Step 2

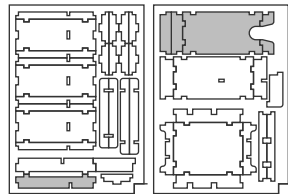


Finished tray

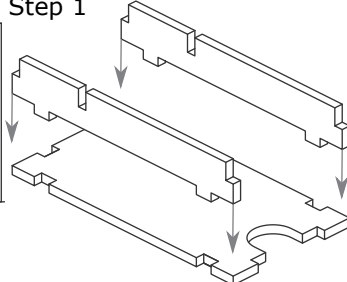


### Tray 4

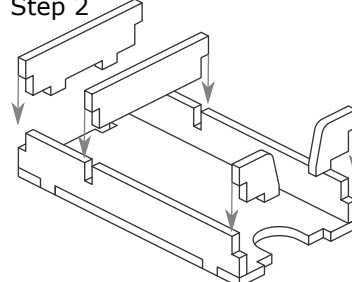
Sheet A1, A2 Sheet C



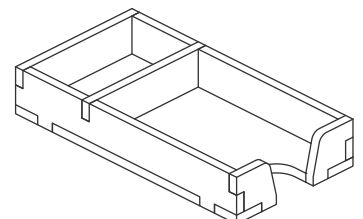
Step 1



Step 2

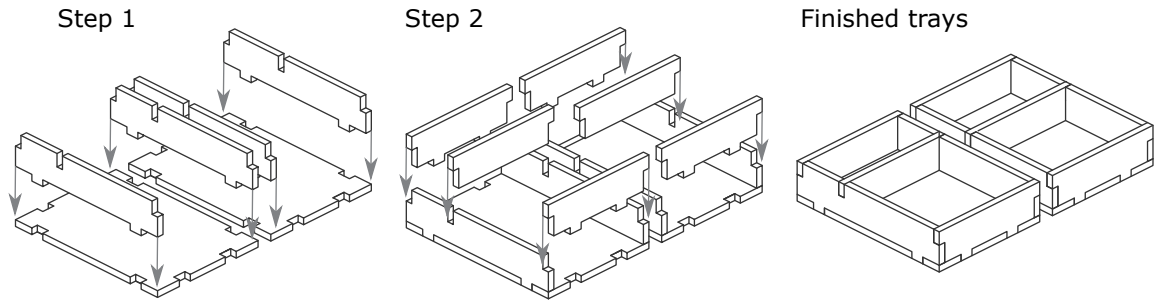
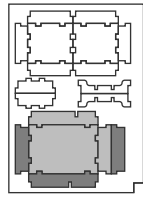


Finished tray



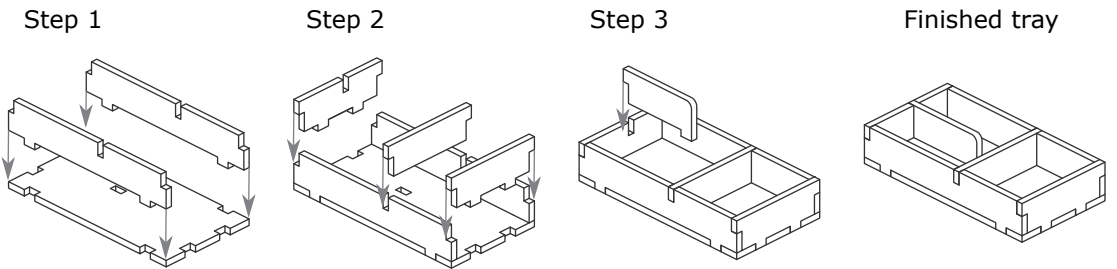
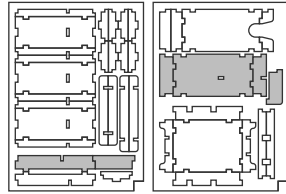
**Trays 5a, 5b**

Sheet B1, B2



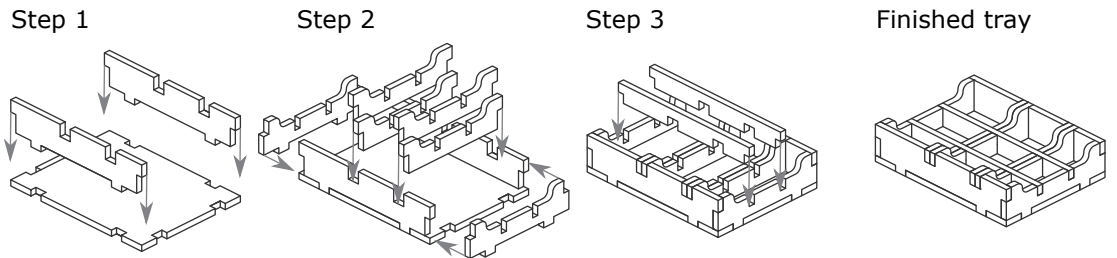
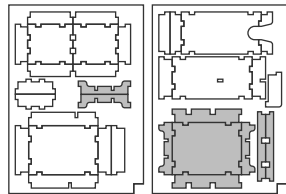
**Tray 6**

Sheet A1, A2 Sheet C

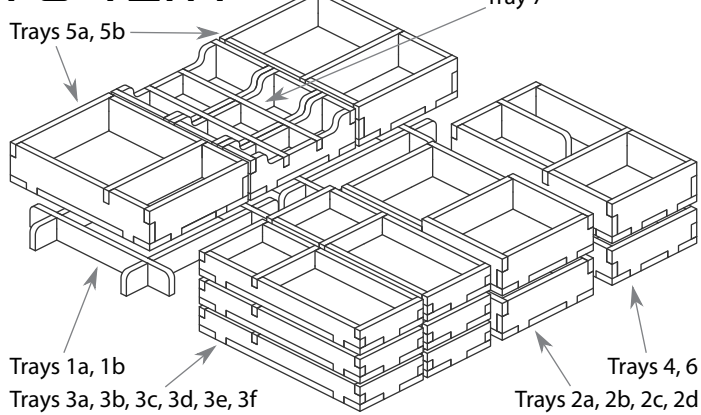


**Tray 7**

Sheet B1, B2 Sheet C



**FS-TLTM**



Please check [www.foldedspace.com](http://www.foldedspace.com) for photos of this insert in use.

**Tray legend:**

- Tray 1a, b - filler trays
- Tray 2a, b, c, d - player trays
- Tray 3a, b, c, d, e - resource tokens
- Tray 3f - +100/+200 victory point markers and action point counters
- Tray 4 - solo mode cards
- Tray 5a - fair tiles, action wheel and resource dice
- Tray 5b - cathedral and action tiles
- Tray 6 - town tiles, corruption tokens, and other tiles
- Tray 7 - bonus, contract and character tiles

Note: the player boards are placed on top of Trays 1a, b, 5a, b, & 7 before adding the rule books and game board. The dice bag is placed on top of everything with the draw string tucked down next to the board.