

Assembly Instructions

The package contains 5 sheets, two identical to the other two and one different sheet.

The parts marked in sheets A2 & B2 are to be discarded.

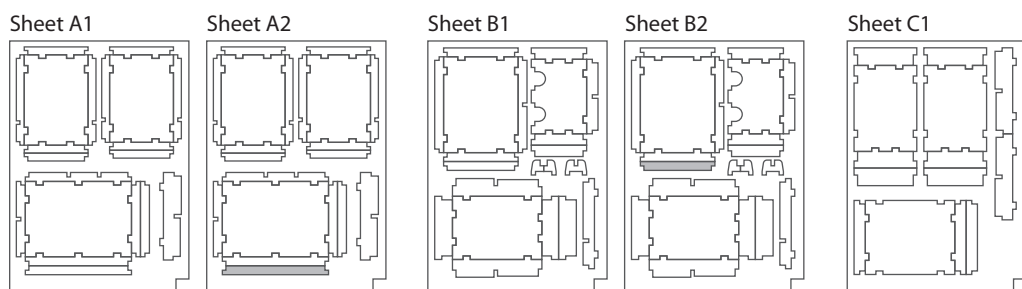
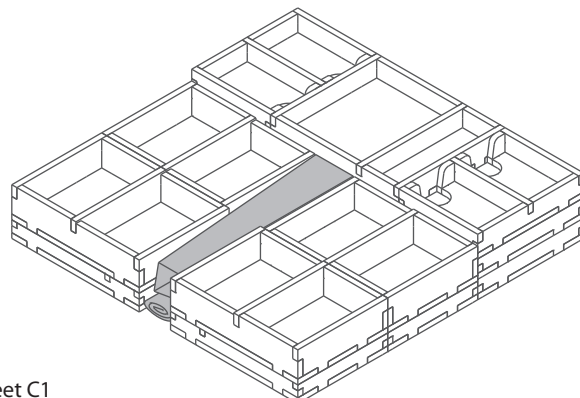
After assembly the trays are put in three layers in the original game box.

Ordinary PVA glue is required when assembling each tray.

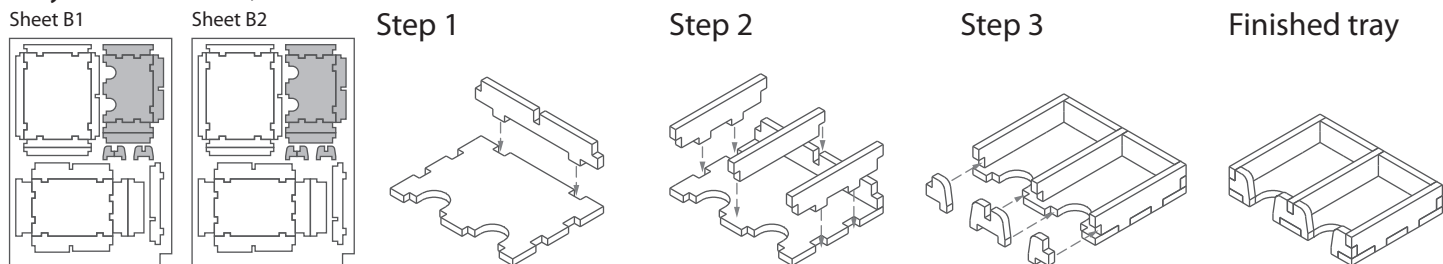
Please make sure you dry-assemble each tray correctly before gluing it together.

Please check www.foldedspace.net for general assembly tips.

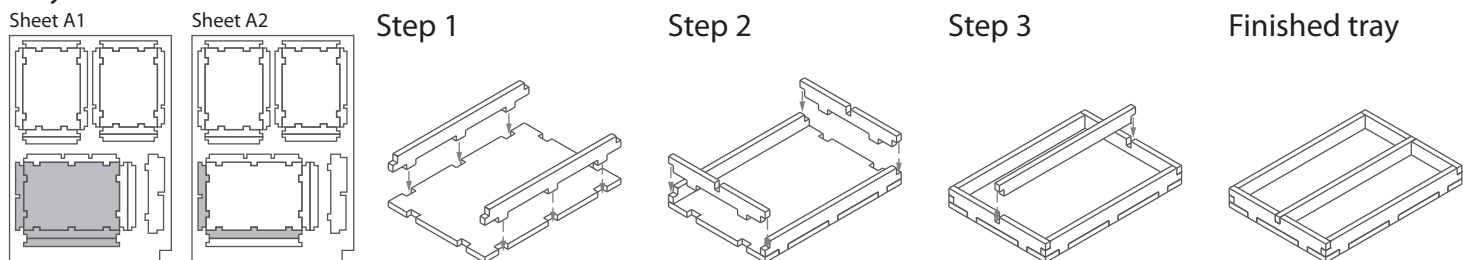
FS-TKH



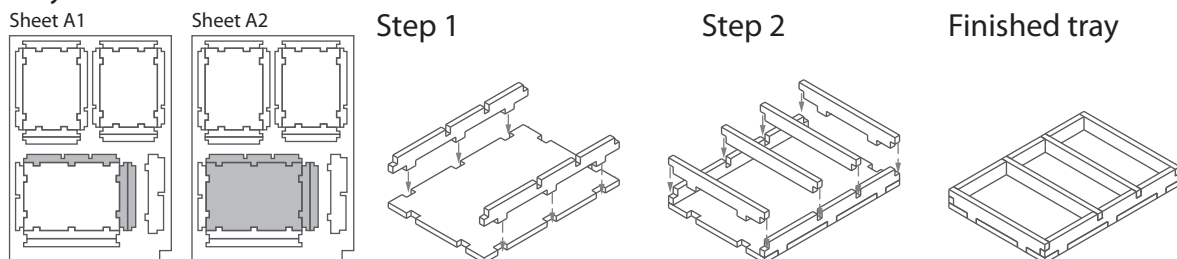
Tray 1a & 1b (the trays are identical)



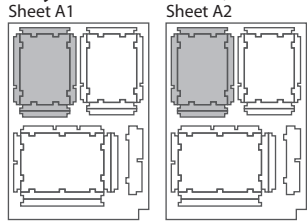
Tray 2a



Tray 2b

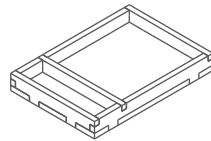


Tray 3a & 3b (the trays are identical)

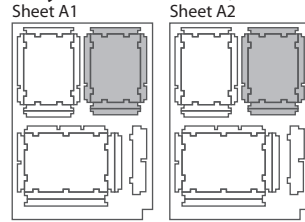


To assemble repeat steps of Tray 2b.

Finished tray

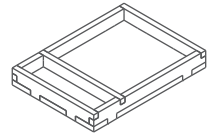


Tray 4a & 4b (the trays are identical)

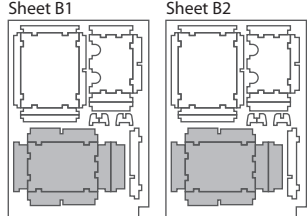


To assemble repeat steps of Tray 2b.

Finished tray

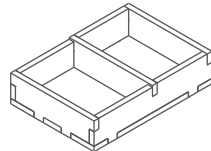


Tray 5a & 5b (the trays are identical)

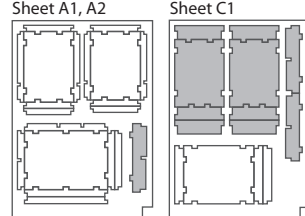


To assemble repeat steps of Tray 2b.

Finished tray

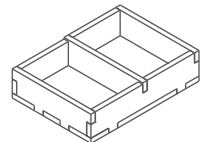


Tray 6a & 6b (the trays are identical)

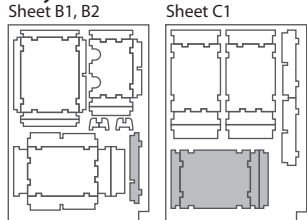


To assemble repeat steps of Tray 2b.

Finished tray

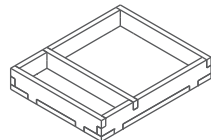


Tray 7

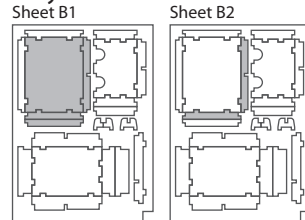


To assemble repeat steps of Tray 2b.

Finished tray

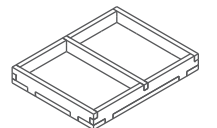


Tray 8a

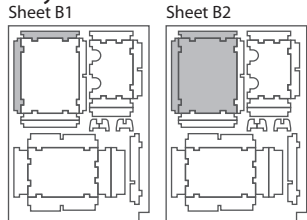


To assemble repeat steps of Tray 2b.

Finished tray

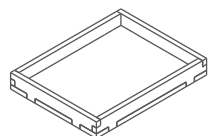


Tray 8b

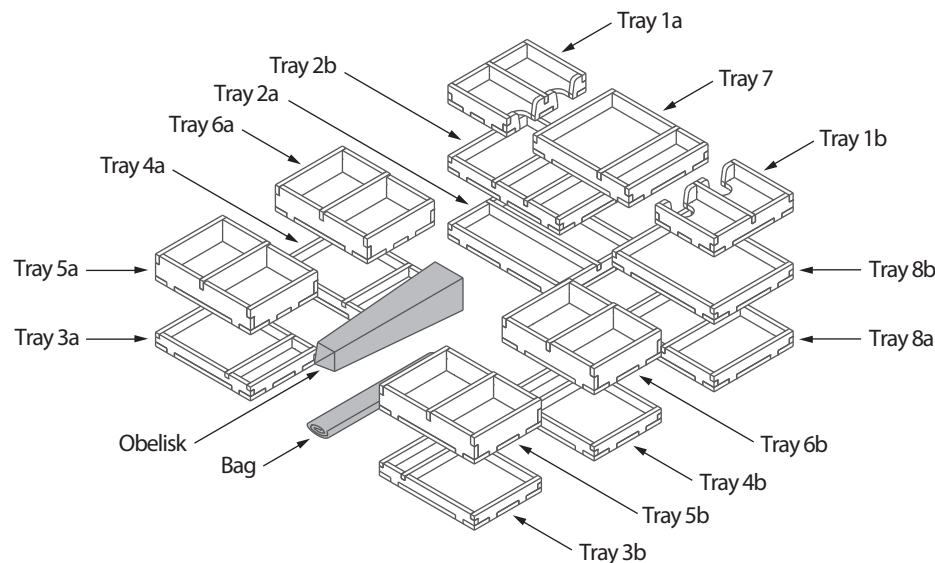


To assemble repeat steps of Tray 2b.

Finished tray



FS-TKH



Please check www.foldedspace.net for photos of this insert in use.

Tray legend:

- Tray 1a, b - cards
- Tray 2a - pillar tiles
- Tray 2b - scribes, gold & faith tokens
- Tray 3a, b & 4a, b - resource tokens by type
- Tray 5a, b & 6a, b - player pieces
- Tray 7 - dice, bonus tiles, scoring markers
- Tray 8a - solo mode components
- Tray 8b - player aid cards

Note: the cloth bag is rolled up and place in the middle of the box under the obelisk as shown.