

FS-7WDUEL insert compatible with 7 Wonders Duel®, incl. Pantheon® expansion

Assembly Instructions

The package contains 2 sheets, they are both identical.

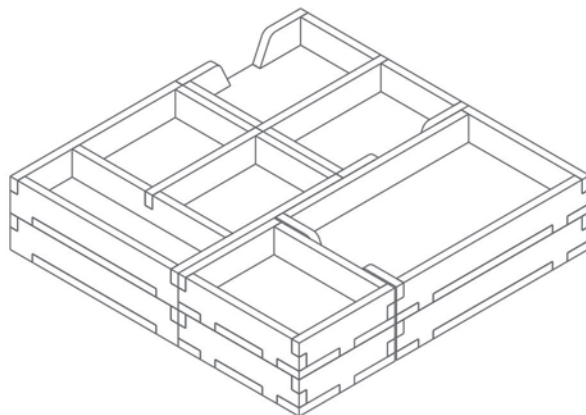
After assembly the trays are put in two layers in the original game box.

Ordinary PVA glue is required when assembling each tray.

Please make sure you dry-assemble each tray correctly before gluing it together.

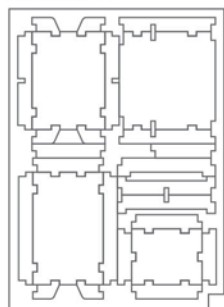
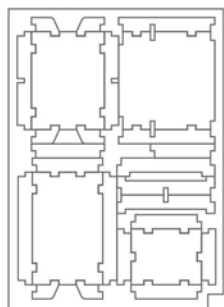
Please check www.foldedspace.net for general assembly tips.

FS-7WDUEL



Sheet A1

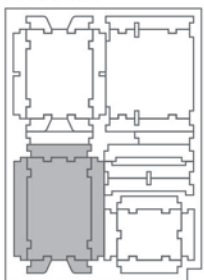
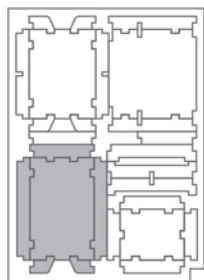
Sheet A2



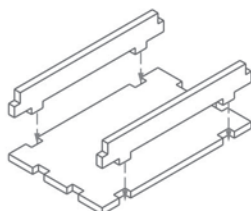
Tray 1a & 1b (the trays are identical)

Sheet A1

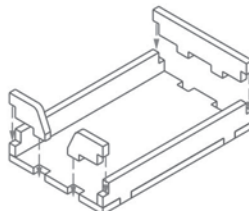
Sheet A2



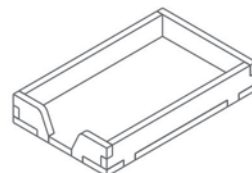
Step 1



Step 2



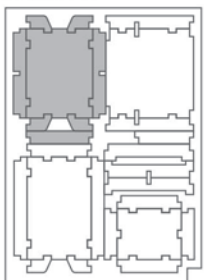
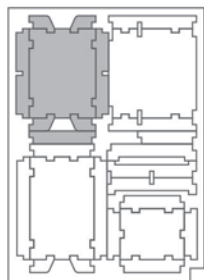
Finished tray



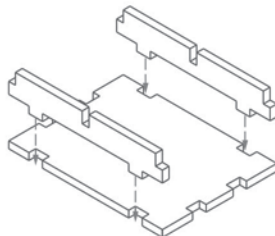
Tray 2a & 2b (the trays are identical)

Sheet A1

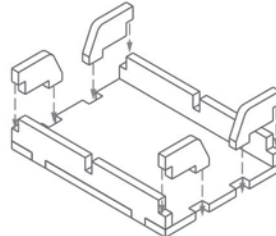
Sheet A2



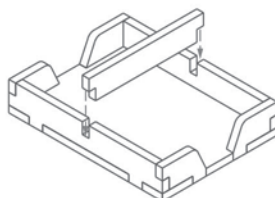
Step 1



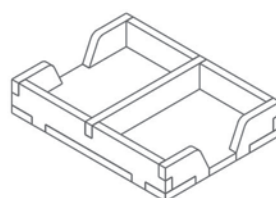
Step 2



Step 3



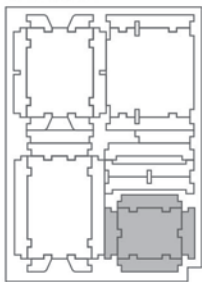
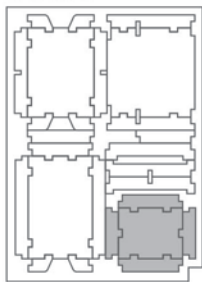
Finished tray



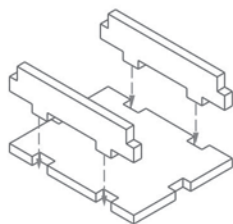
Tray 3a & 3b (the trays are identical)

Sheet A1

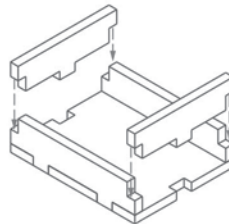
Sheet A2



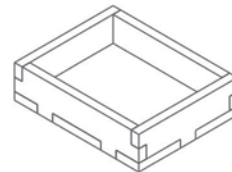
Step 1



Step 2



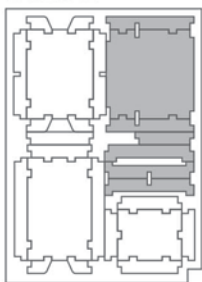
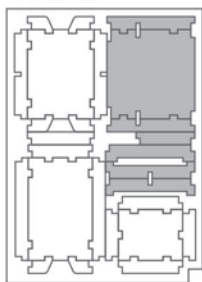
Finished tray



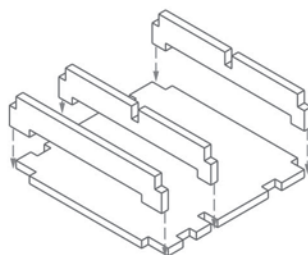
Tray 4a & 4b (the trays are identical)

Sheet A1

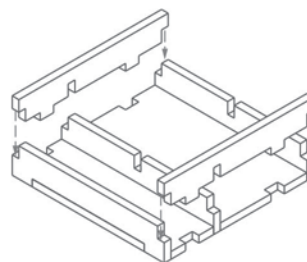
Sheet A2



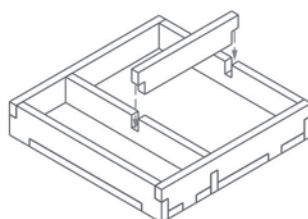
Step 1



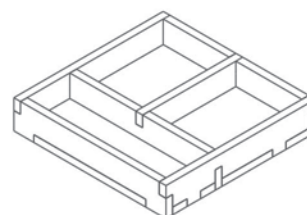
Step 2



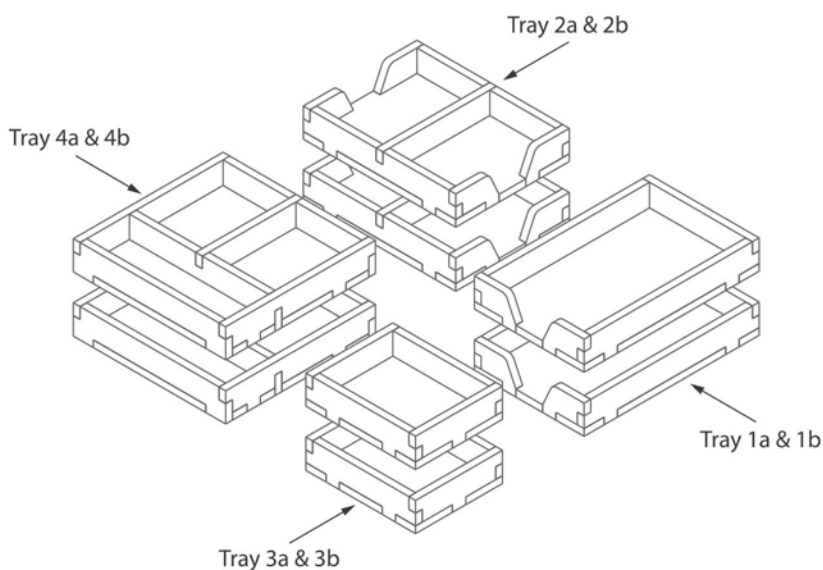
Step 3



Finished tray



FS-7WDUEL



Please check www.foldedspace.net
for photos of this insert in use.

Tray legend:

- Tray 1a - wonder and divinity cards
- Tray 1b - score-pads
- Tray 2a - age I and age II cards
- Tray 2b - age III, guild and grand temple cards
- Tray 3a - progress tokens
- Tray 3b - spare tray
- Tray 4a - pawns, mythology and other tokens
- Tray 4b - coins