

# FS-LOR insert

compatible with Lorenzo il Magnifico®  
incl. the Houses of Renaissance® expansion

## Assembly Instructions

The package contains 4 sheets, two of them are identical to the other two.

The parts marked in sheet B2 are to be discarded.

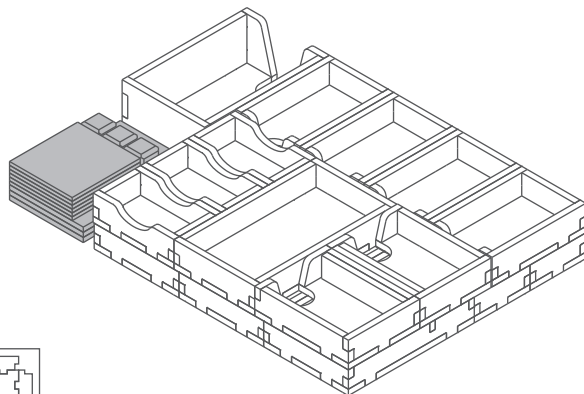
After assembly the trays are put in two layers in the original game box.

Ordinary PVA glue is required when assembling each tray.

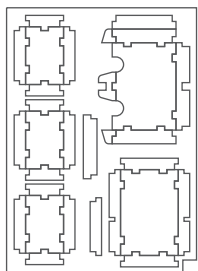
Please make sure you dry-assemble each tray correctly before gluing it together.

Please check [www.foldedspace.net](http://www.foldedspace.net) for general assembly tips.

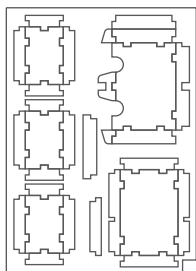
## FS-LOR



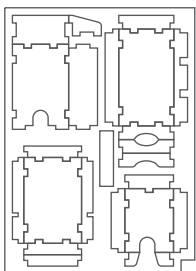
Sheet A1



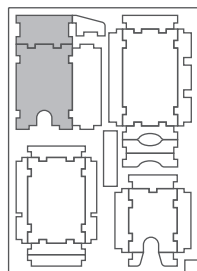
Sheet A2



Sheet B1

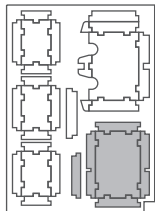


Sheet B2

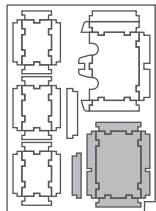


### Tray 1a & 1b (the trays are identical)

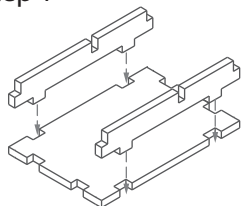
Sheet A1



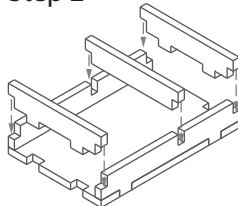
Sheet A2



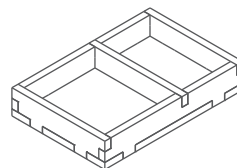
Step 1



Step 2

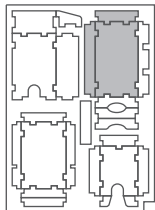


Finished tray

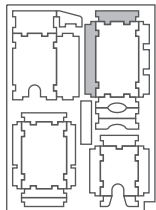


### Tray 2

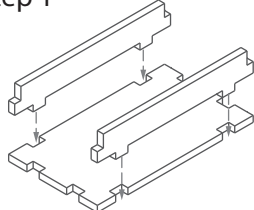
Sheet B1



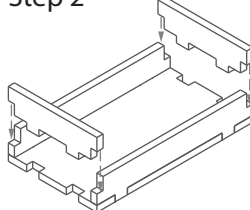
Sheet B2



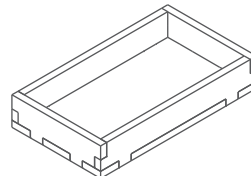
Step 1



Step 2

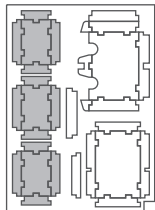


Finished tray

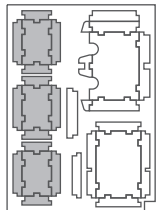


### Tray 3a, 3b, 3c, 3d, 3e & 3f (the trays are identical)

Sheet A1

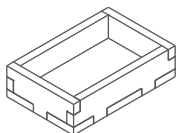


Sheet A2



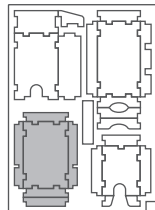
To assemble  
repeat steps  
of Tray 2.

Finished tray

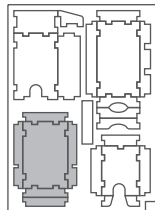


### Tray 4a, b (2nd tray is optional, and not needed for the insert)

Sheet B1

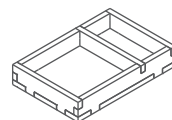


Sheet B2



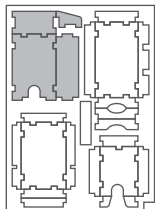
To assemble  
repeat steps  
of Tray 1a, b.

Finished tray

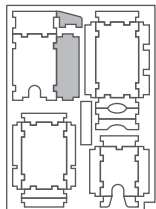


### Tray 5

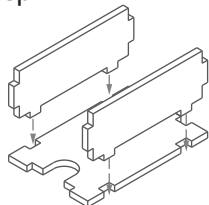
Sheet B1



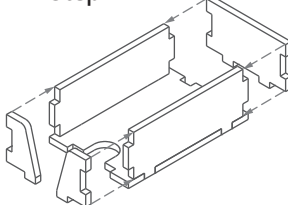
Sheet B2



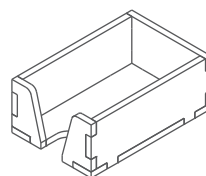
Step 1



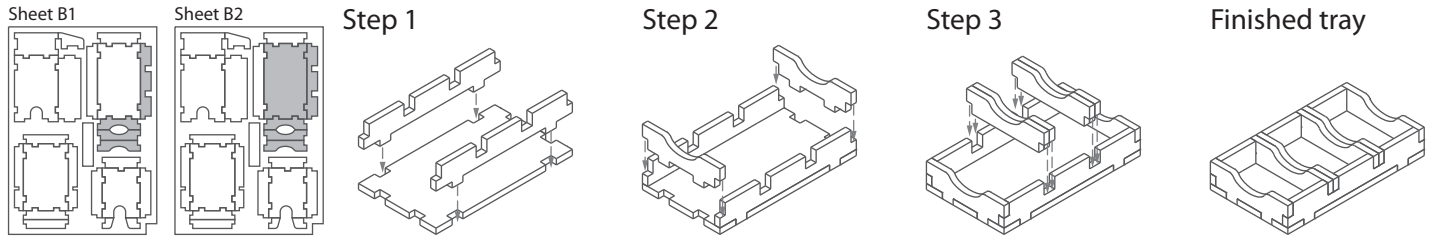
Step 2



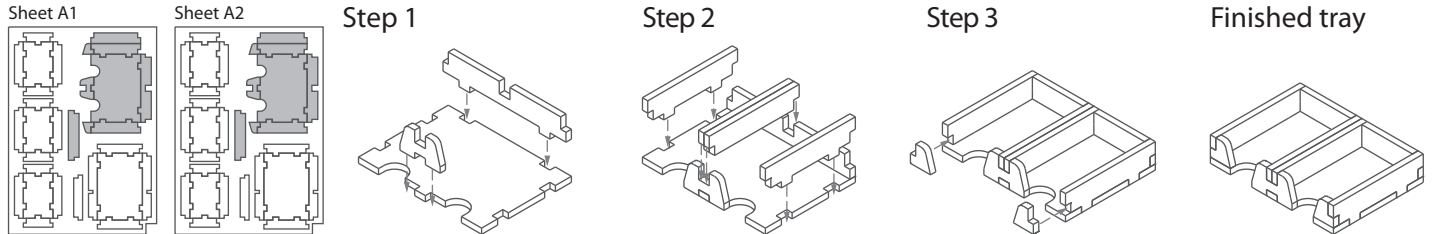
Finished tray



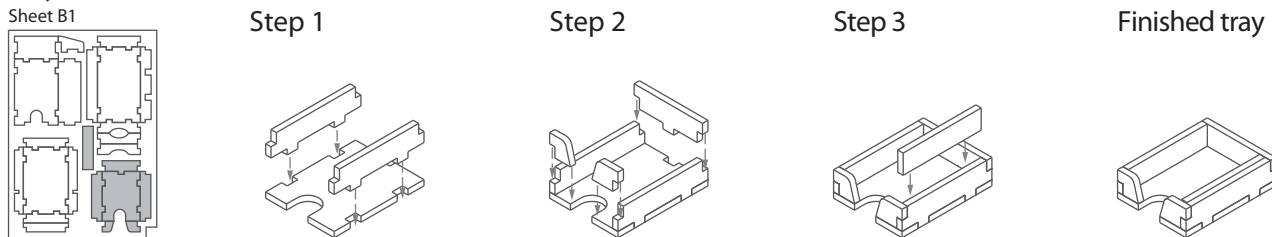
**Tray 6**



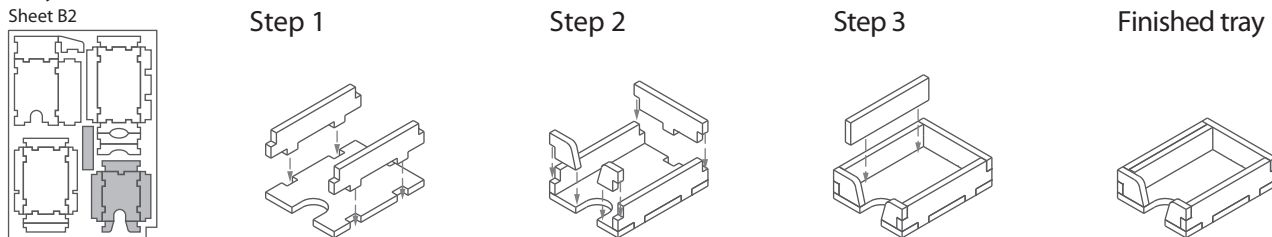
**Tray 7a & 7b** (the trays are identical)



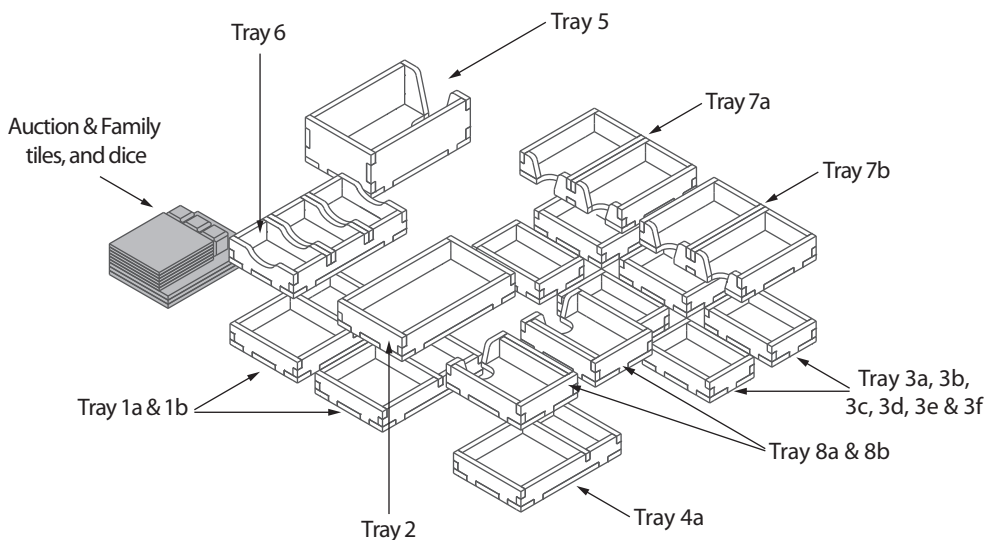
**Tray 8a**



**Tray 8b** (the tray is mirrored version of Tray 8a - turn bottom piece upside-down to assemble correctly)



**FS-LOR**



Please check [www.foldedspace.net](http://www.foldedspace.net) for photos of this insert in use.

**Tray legend:**

- Tray 1a - wood and stone
- Tray 1b - large resources and other tokens
- Tray 2 - servant meeples
- Tray 3a, b, c, d, e, f - player pieces
- Tray 4a - coins
- Tray 4b - tray not needed
- Tray 5 - leader cards
- Tray 6 - excommunication tiles
- Tray 7a, b - development cards
- Tray 8a, b - special development cards

Note: This insert has one spare tray (4b) which is not needed for this game. The tray can still be assembled and used elsewhere.