

FS-ARC insert compatible with Architects of the West Kingdom® incl. the Age of Artisans® expansion



Assembly Instructions

The package contains 3 sheets, they are identical to each other.

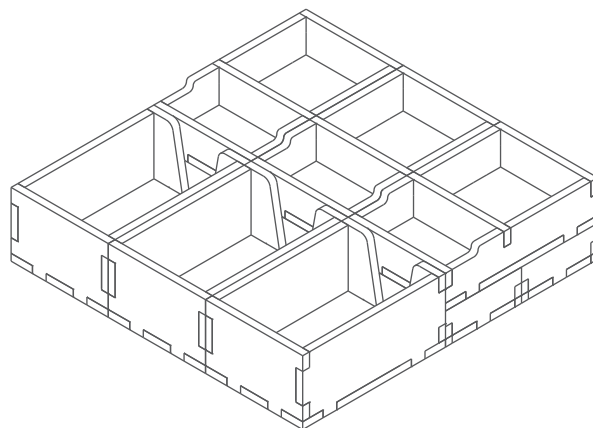
After assembly the trays are put in two layers in the original game box.

Ordinary PVA glue is required when assembling each tray.

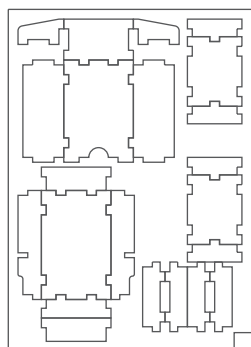
Please make sure you dry-assemble each tray correctly before gluing it together.

Please check www.foldedspace.net for general assembly tips.

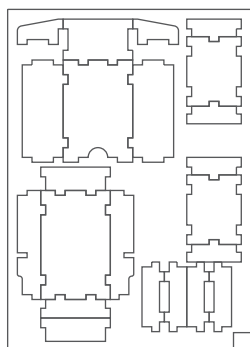
FS-ARC



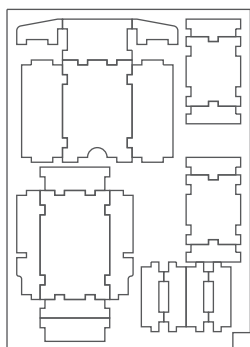
Sheet A1



Sheet A2

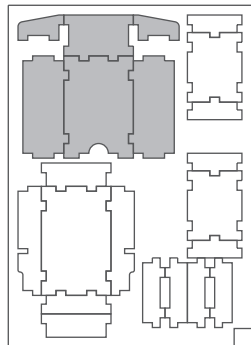


Sheet A3

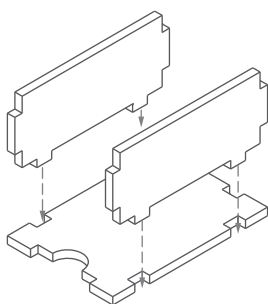


Tray 1a, 1b & 1c (the trays are identical)

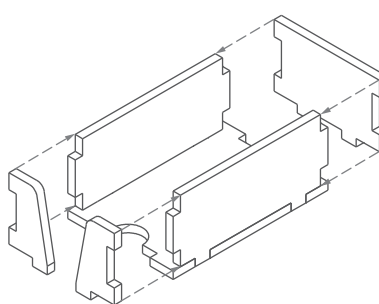
Sheet A1, A2, A3



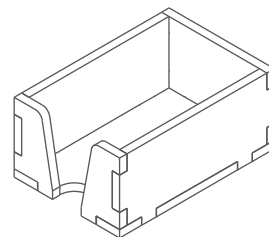
Step 1



Step 2

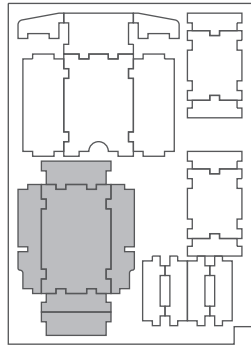


Finished tray

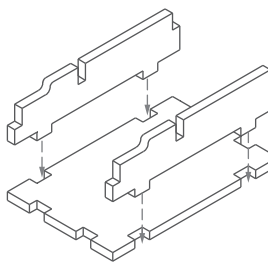


Tray 2a, 2b & 2c (the trays are identical)

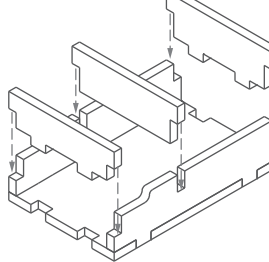
Sheet A1, A2, A3



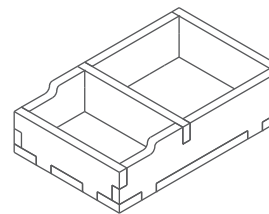
Step 1



Step 2

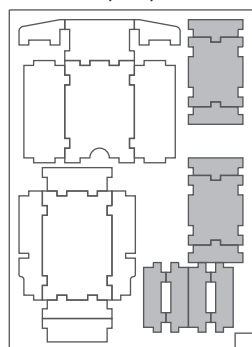


Finished tray

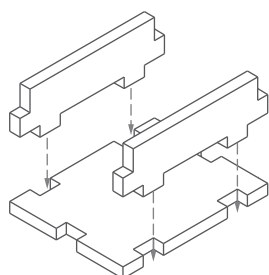


Tray 3a, 3b, 3c, 3d, 3e & 3f (the trays are identical)

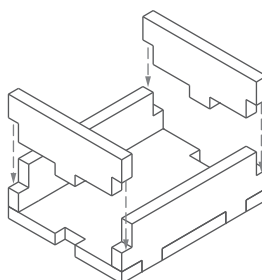
Sheet A1, A2, A3



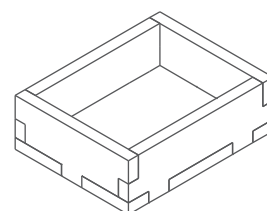
Step 1



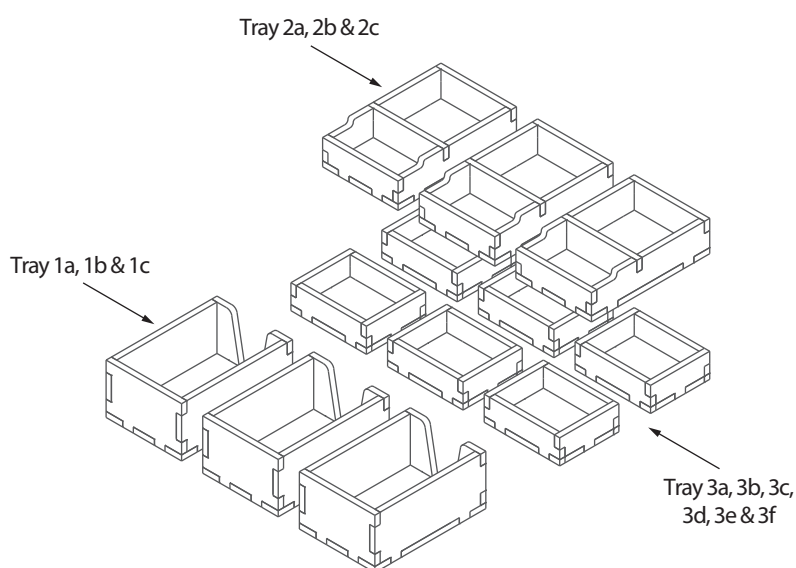
Step 2



Finished tray



FS-ARC



Please check www.foldedspace.net for photos of this insert in use.

Tray legend:

- Tray 1a - apprentice and debt cards
- Tray 1b - building, reward and multiplier cards
- Tray 1c - other large and black market cards
- Tray 2a - marble and stone
- Tray 2b - clay and gold
- Tray 2c - silver coins and wood
- Tray 3a, b, c, d, e, f - player pieces

Note: when clearing away the game the expansion player boards are placed first on top of Trays 1, followed by the rules and other game boards. Once fully loaded the box lid will lift by 9mm. This will reduce as sheets are used form the expansion scorepad.