

FS-RDRS insert  
compatible with Raiders of the North Sea®,  
incl. the Hall of Heroes® and Fields of Fame® expansions

## Assembly Instructions

The package contains 4 sheets, two of them are identical to the other two.

The part marked in sheet A2 is to be discarded.

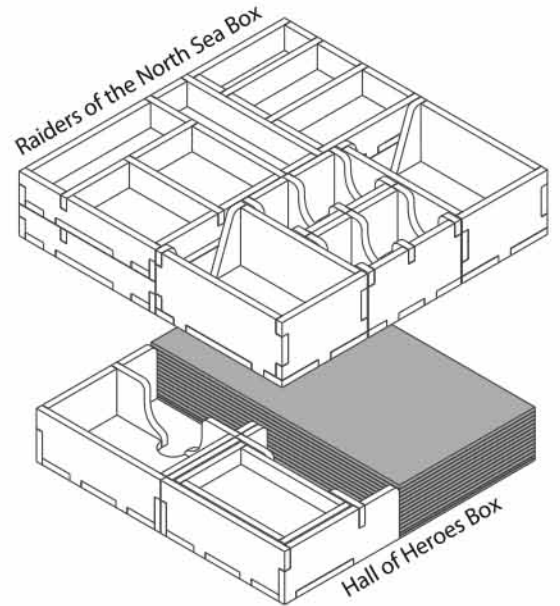
After assembly the trays are put in two layers into both boxes.

Ordinary PVA glue is required when assembling each tray.

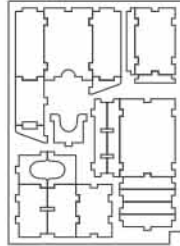
Please make sure you dry-assemble each tray correctly before gluing it together.

Please check [www.foldedspace.net](http://www.foldedspace.net) for general assembly tips.

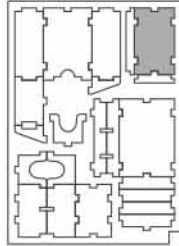
**FS-RDRS**



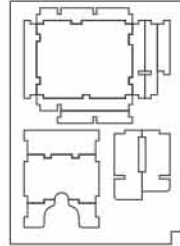
Sheet A1



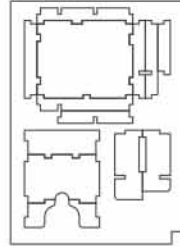
Sheet A2



Sheet B1



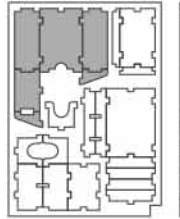
Sheet B2



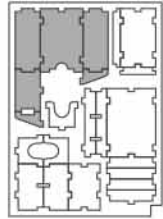
Tray 1a & 1b

(the trays are identical)

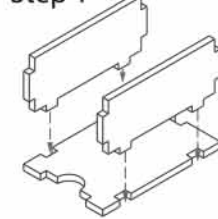
Sheet A1



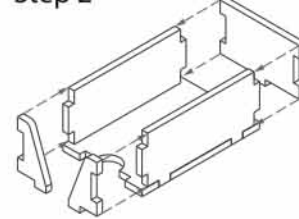
Sheet A2



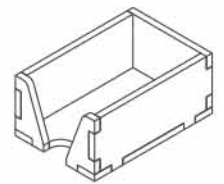
Step 1



Step 2



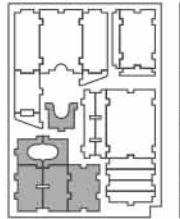
Finished tray



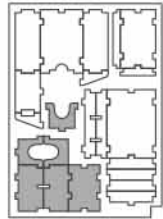
Tray 2a & 2b

(the trays are identical)

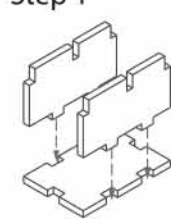
Sheet A1



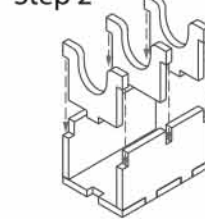
Sheet A2



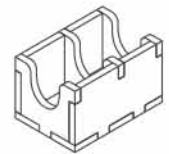
Step 1



Step 2



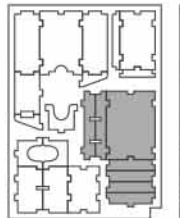
Finished tray



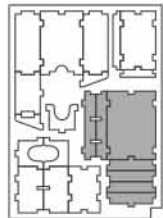
Tray 3a & 3b

(the trays are identical)

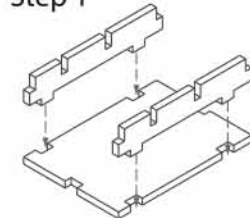
Sheet A1



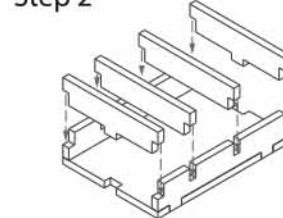
Sheet A2



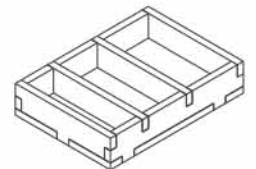
Step 1



Step 2

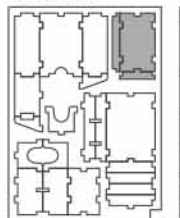


Finished tray

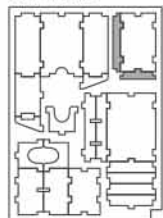


Tray 4

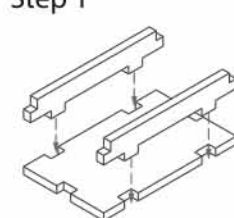
Sheet A1



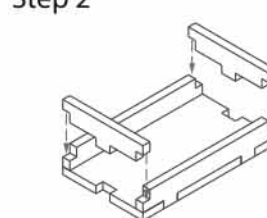
Sheet A2



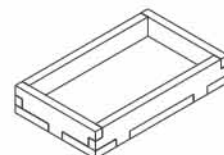
Step 1



Step 2

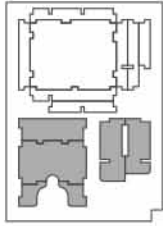


Finished tray

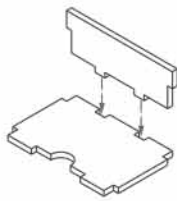


**Tray 5a**

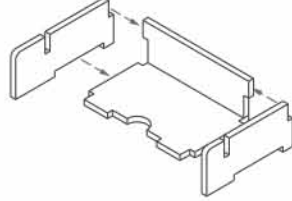
Sheet B1



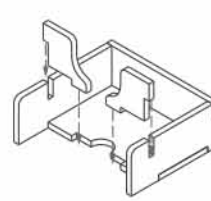
Step 1



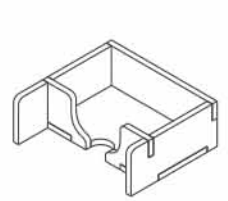
Step 2



Step 3

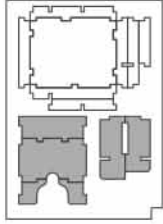


Finished tray

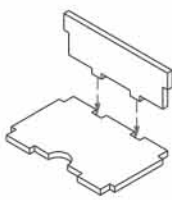


**Tray 5b** (the tray is a mirrored version of Tray 5a)

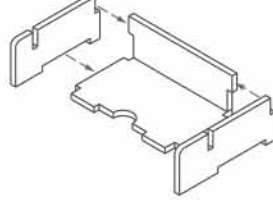
Sheet B2



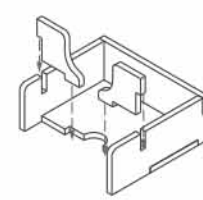
Step 1



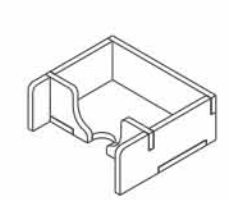
Step 2



Step 3

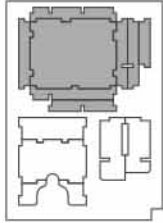


Finished tray

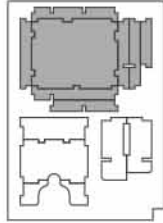


**Tray 6a & 6b** (the trays are identical)

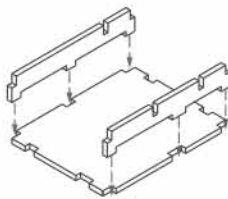
Sheet B1



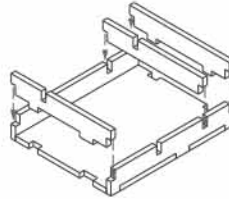
Sheet B2



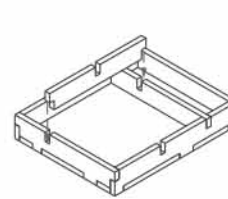
Step 1



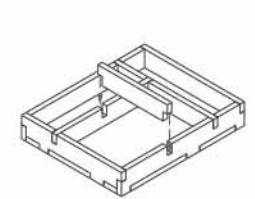
Step 2



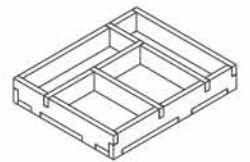
Step 3



Step 4

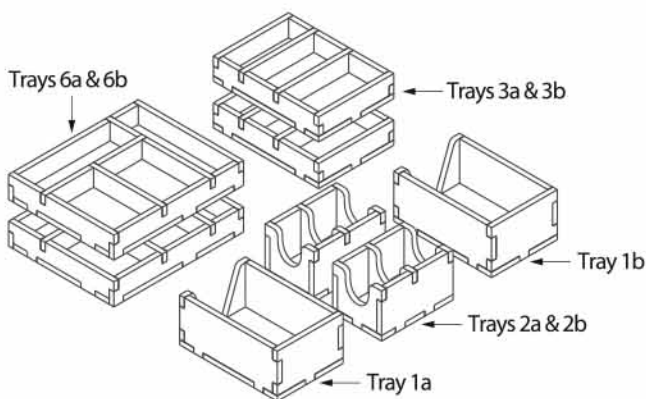


Finished tray

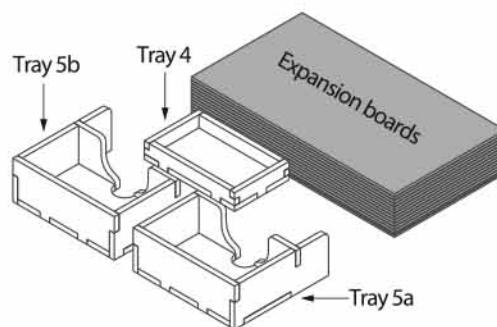


**FS-RDRS**

Raiders of the North Sea Box



Hall of Heroes Box



**Tray legend:**

- Tray 1a, b - townsfolk and other cards
- Tray 2a, b - offering, reputation and quest tiles
- Tray 3a, b - resources & jarl tokens and game dice
- Tray 4 - multiplier tiles
- Tray 5a, b - townsfolk cards
- Tray 6a, b - workers, mead, score markers, wounds, coins, and provision tokens

Please check [www.foldedspace.net](http://www.foldedspace.net) for photos of this insert in use.

**Tip:** Keep the instructions in the bottom of your board game box as a reminder of how the insert fits together.