

FS-SCY+ insert
 compatible with Scythe Fenris®,
 incl. Wind Gambit® and Scythe Encounters® expansions



Assembly Instructions

The package contains 6 sheets, three of them are identical to the other three.

The parts marked in sheet C2 are to be discarded.

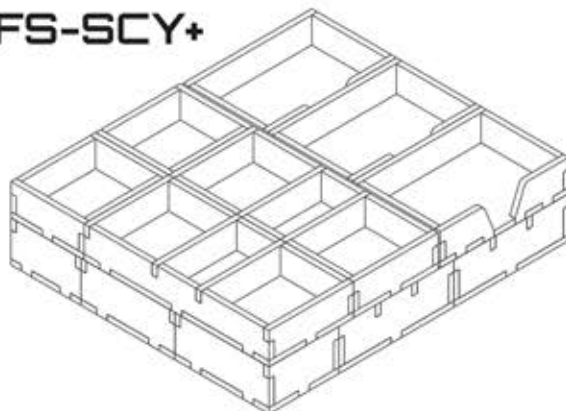
After assembly the trays are put in two layers in the original game box.

Ordinary PVA glue is required when assembling each tray.

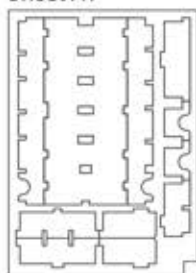
Please make sure you dry-assemble each tray correctly before gluing it together.

Please check www.foldedspace.net for general assembly tips.

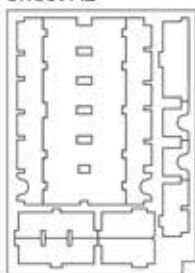
FS-SCY+



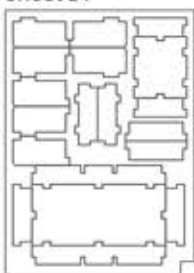
Sheet A1



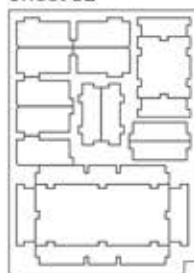
Sheet A2



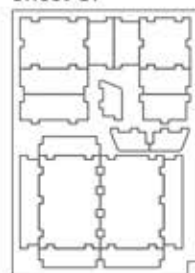
Sheet B1



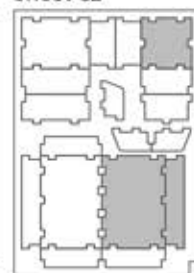
Sheet B2



Sheet C1

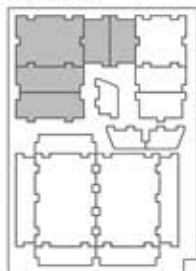


Sheet C2

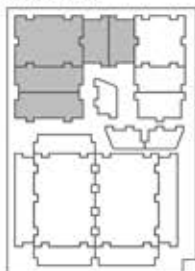


Tray 1a & 1b (the trays are identical)

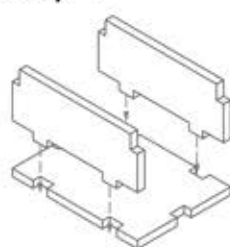
Sheet C1



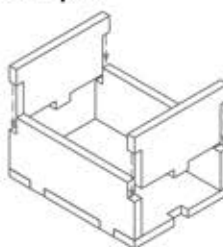
Sheet C2



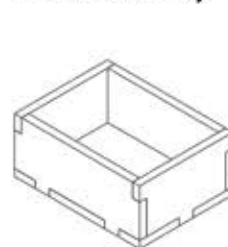
Step 1



Step 2

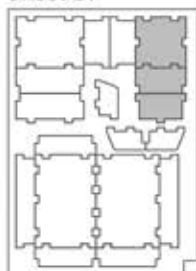


Finished tray

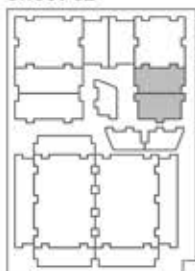


Tray 2

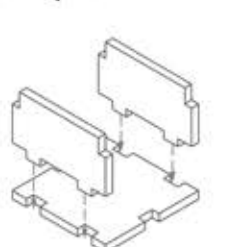
Sheet C1



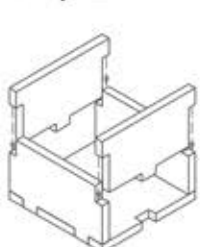
Sheet C2



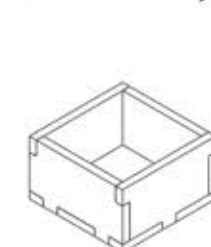
Step 1



Step 2

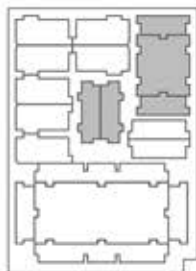


Finished tray

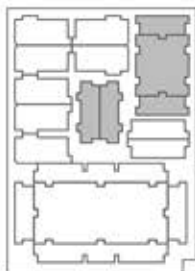


Tray 3a & 3b (the trays are identical)

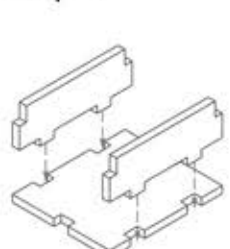
Sheet B1



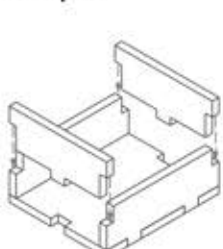
Sheet B2



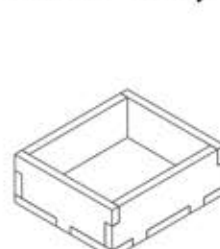
Step 1



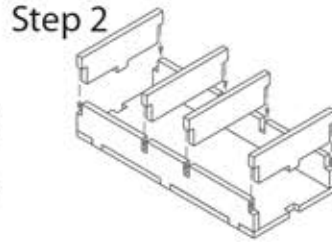
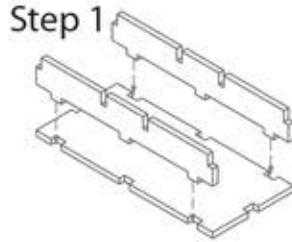
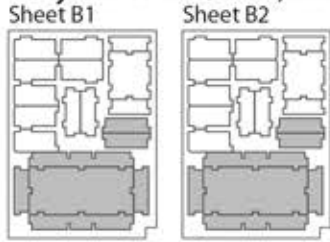
Step 2



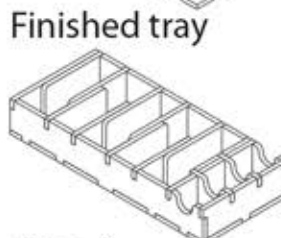
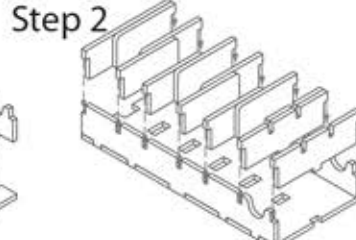
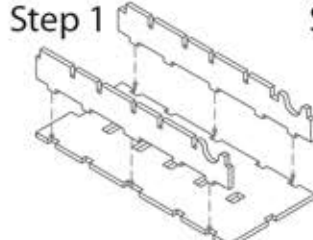
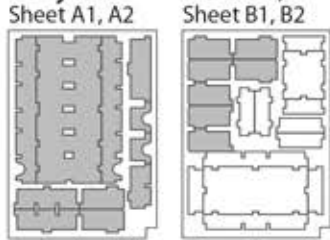
Finished tray



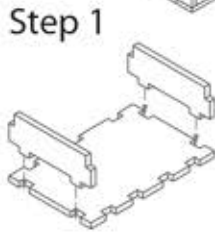
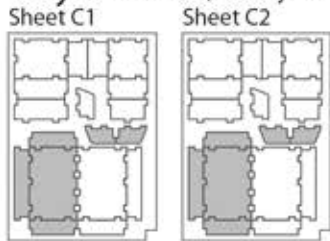
Tray 4a & 4b (the trays are identical)



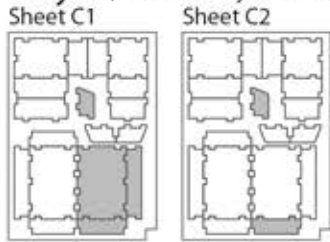
Tray 5a & 5b (the trays are identical)



Tray 6a & 6b (the trays are identical)



Tray 7 (note: the tray is 3mm wider than Tray 6a & 6b)



To assemble
repeat steps
for Tray 6a & 6b.



Please check www.foldedspace.net for photos of this insert in use.

Tray legend:

- Tray 1a, b - Fenris faction miniatures
- Tray 2 - Vesna faction miniatures
- Tray 3a - Fenris faction pieces
- Tray 3b - Vesna faction pieces
- Tray 4a - Tesla mono-wheel, dice, alliance & other tokens
- Tray 4b - influence tokens, triumph tiles, mech ability tiles
- Tray 5a - airship miniatures, bases, mech mod tiles
- Tray 5b - airship miniatures, infrastructure mod tiles
- Tray 6a, b - airship tiles
- Tray 7 - resolution tiles

FS-SCY+

