

FS-CYCLAD insert compatible with Cyclades[®],



incl. the Titans[®], Monuments[®], Hades[®], Hecate[®] and Ancient Ruins[®] expansions

Assembly Instructions

The package contains 6 sheets, three of them are identical to the other three.

The parts marked in sheets B2, C2 are to be discarded.

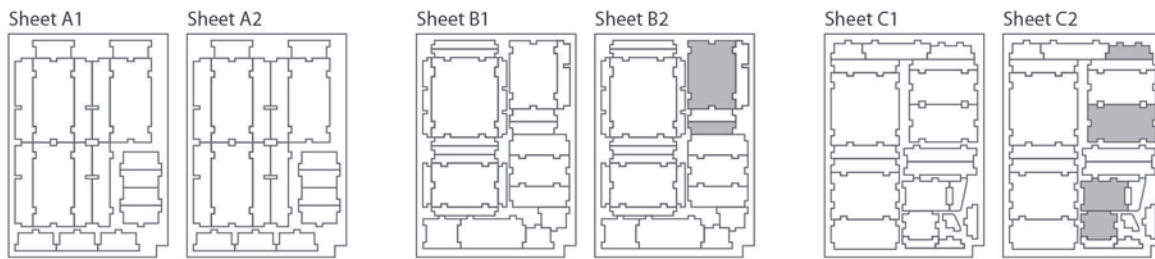
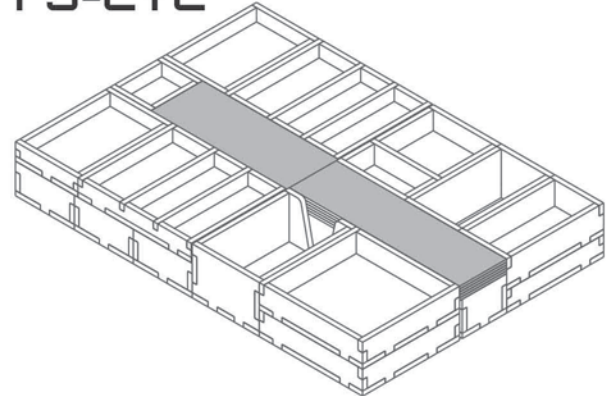
After assembly the trays are placed in up to two layers in the original game box.

Ordinary PVA glue is required when assembling each tray.

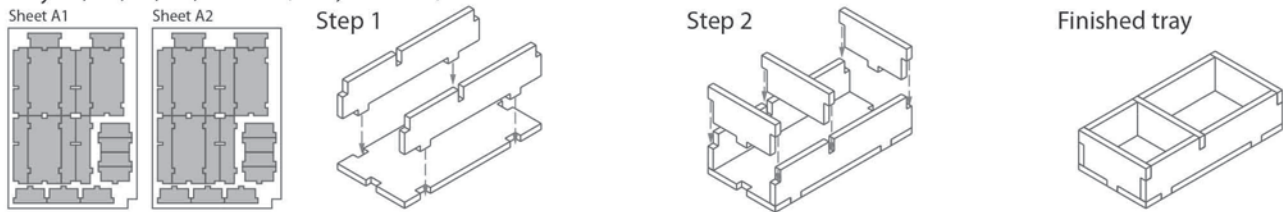
Please make sure you dry-assemble each tray correctly before gluing it together.

Please check www.foldedspace.net for general assembly tips.

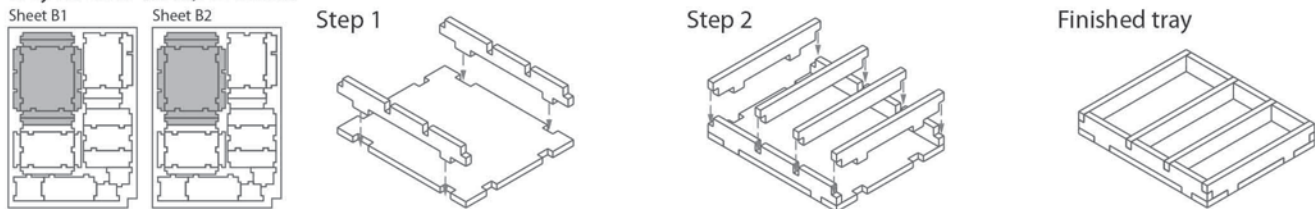
FS-CYC



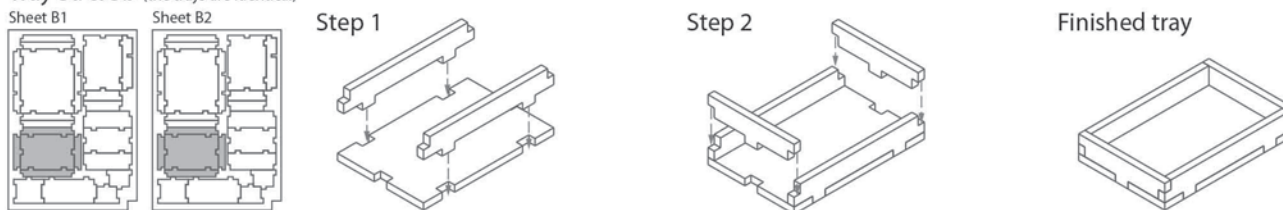
Tray 1a, 1b, 1c, 1d, 1e & 1f (the trays are identical)



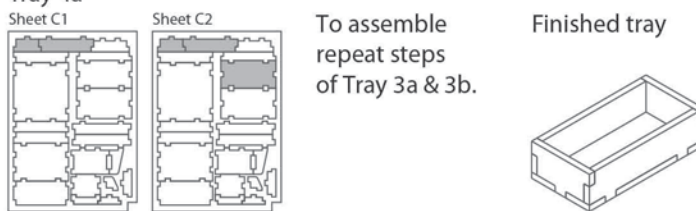
Tray 2a & 2b (the trays are identical)



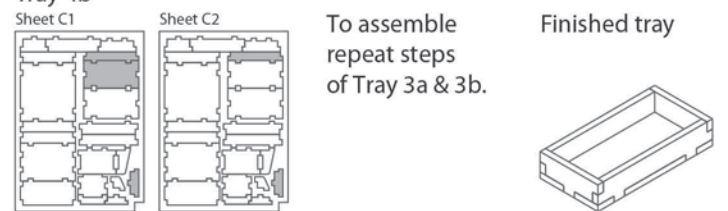
Tray 3a & 3b (the trays are identical)



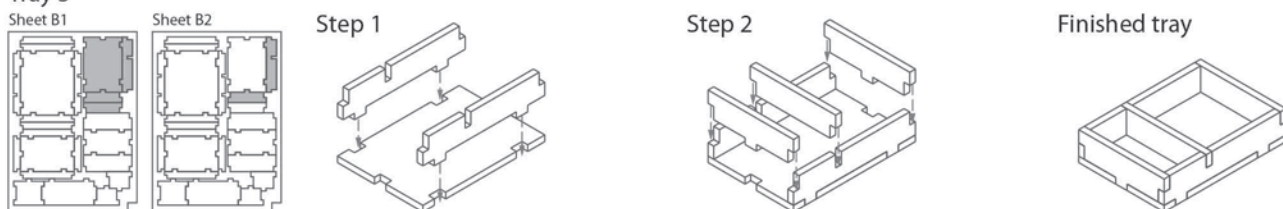
Tray 4a



Tray 4b

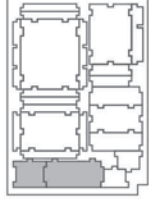


Tray 5

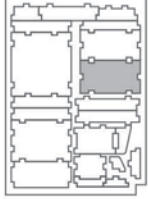


Tray 6

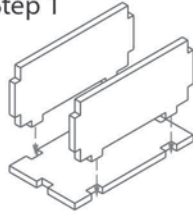
Sheet B1 & B2



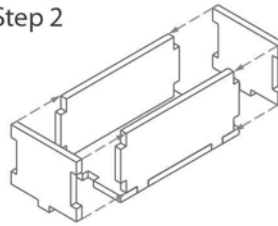
Sheet C1



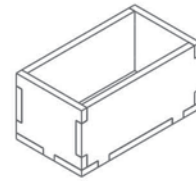
Step 1



Step 2

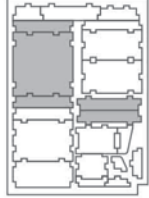


Finished tray

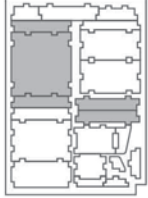


Tray 7a & 7b (the trays are identical)

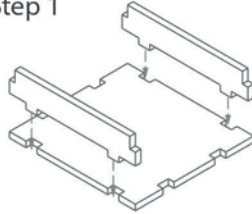
Sheet C1



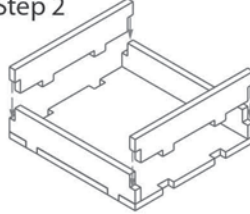
Sheet C2



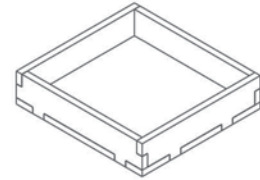
Step 1



Step 2

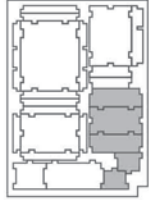


Finished tray

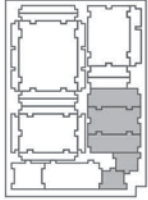


Tray 8a & 8b (the trays are identical)

Sheet B1

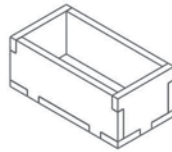


Sheet B2



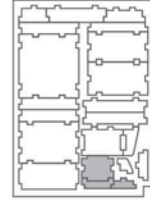
To assemble repeat steps of Tray 7a & 7b.

Finished tray

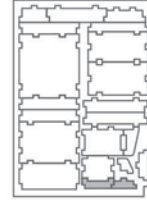


Tray 9

Sheet C1

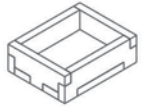


Sheet C2



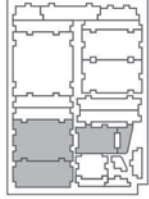
To assemble repeat steps of Tray 7a & 7b.

Finished tray

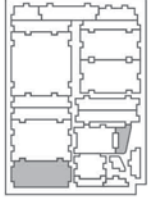


Tray 10a

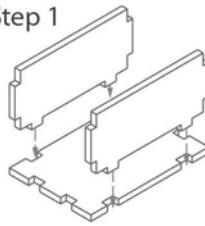
Sheet C1



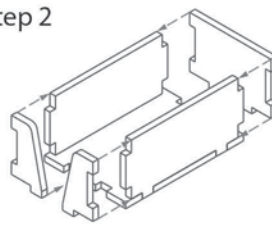
Sheet C2



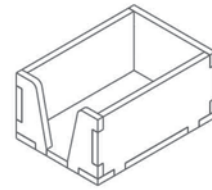
Step 1



Step 2

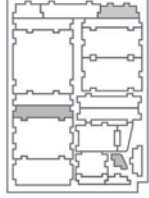


Finished tray

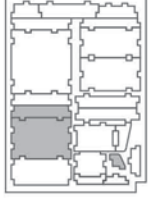


Tray 10b

Sheet C1

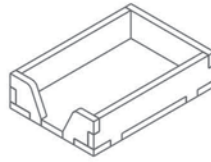


Sheet C2

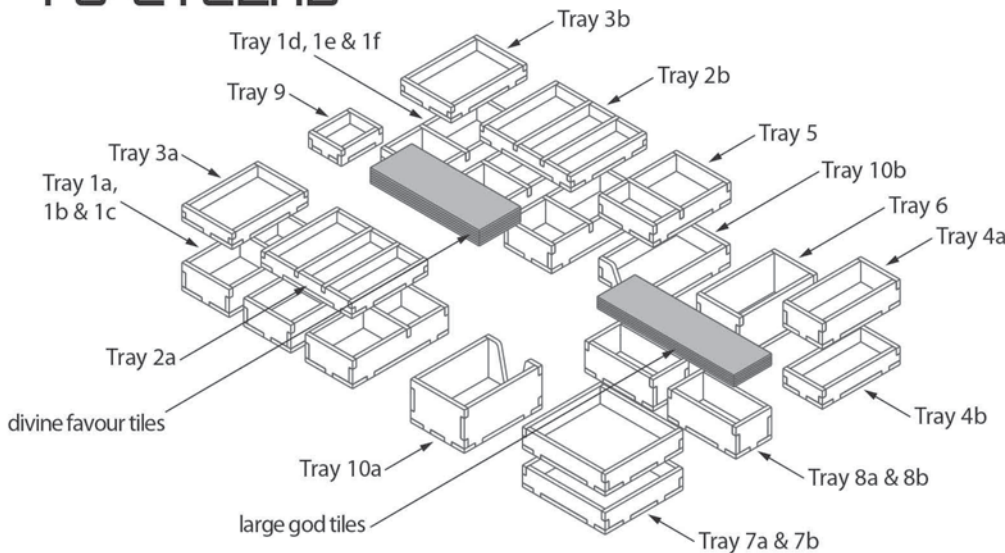


To assemble repeat steps of Tray 10a.

Finished tray



FS-CYCLAD



Please check www.foldedspace.net for photos of this insert in use.

Tray legend:

- Tray 1a, b, c, d, e, f - player pieces
- Tray 2a - metropolises, temples & universities
- Tray 2b - special metropolises, fortresses & ports
- Tray 3a - prosperity markers
- Tray 3b - divine artifact figurines
- Tray 4a - hero figurines
- Tray 4b - spare tray
- Tray 5 - undead figurines & dice
- Tray 6 - monster figurines
- Tray 7a, b - gold pieces
- Tray 8a, b - monument miniatures
- Tray 9 - necropolis & theater building chips
- Tray 10a, b - large cards

Tip: Keep the instructions in the bottom of your board game box as a reminder of how the insert fits together.