

# FS-PUL insert compatible with Pulsar 2849®.



## Assembly Instructions

The package contains 4 sheets, two of them are identical to the other two.

Single part marked in Sheet A2 is unnecessary.

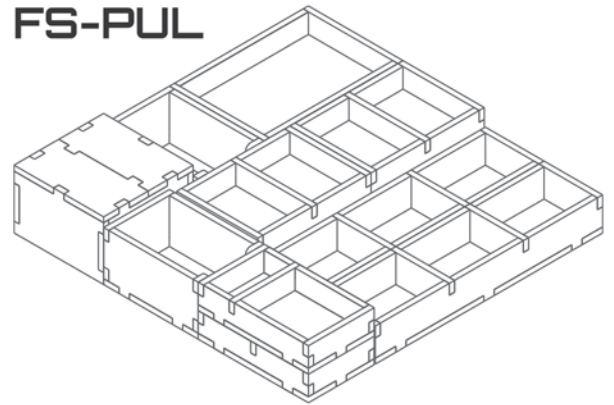
After assembly the trays are put in two layers in the original game box.

Ordinary PVA glue is required when assembling each tray.

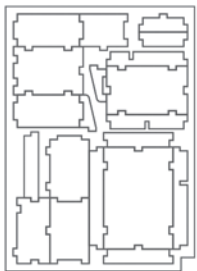
Please make sure you dry-assemble each tray correctly before gluing it together.

Please check [www.foldedspace.net](http://www.foldedspace.net) for general assembly tips.

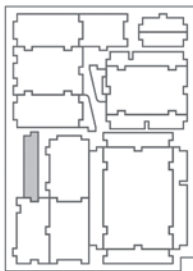
## FS-PUL



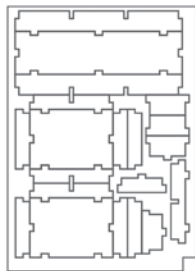
Sheet A1



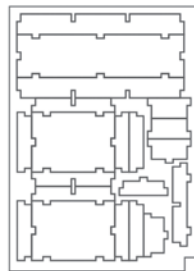
Sheet A2



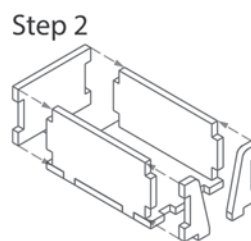
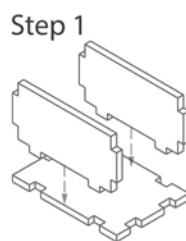
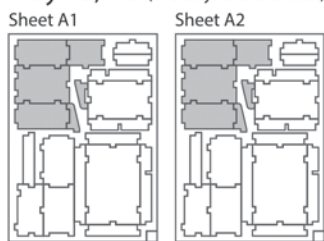
Sheet B1



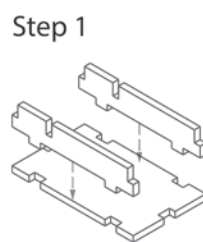
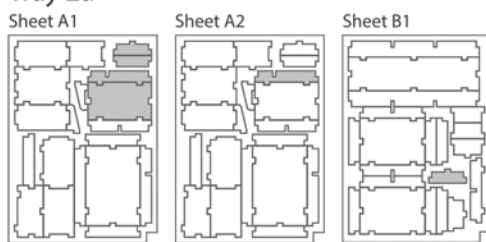
Sheet B2



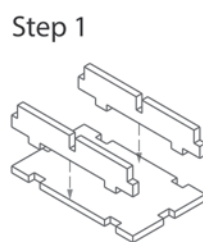
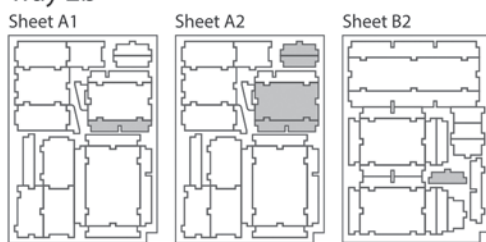
### Tray 1a, 1b (the trays are identical)



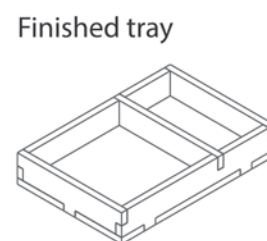
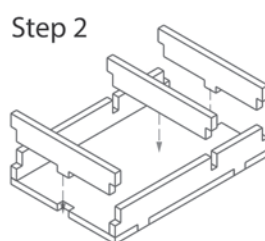
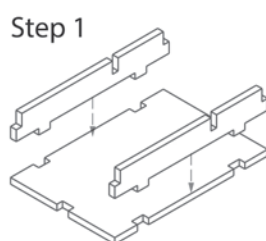
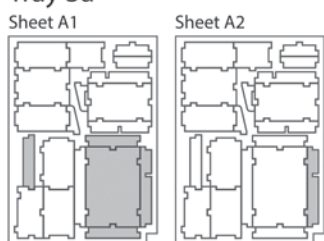
### Tray 2a



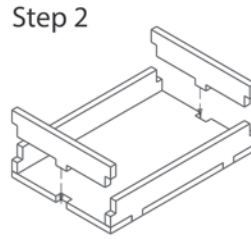
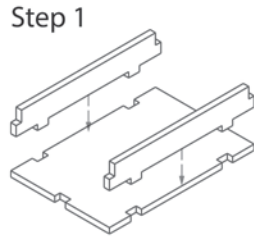
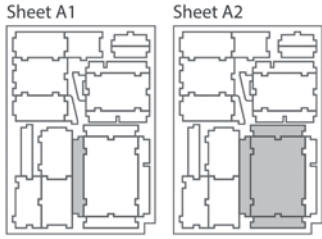
### Tray 2b



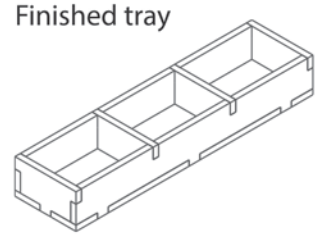
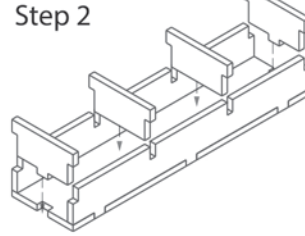
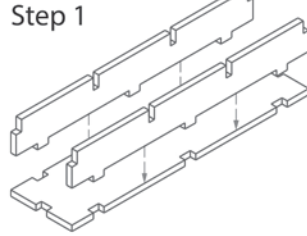
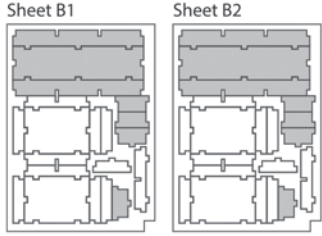
### Tray 3a



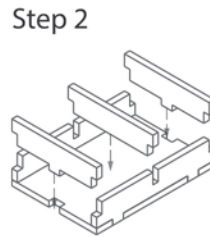
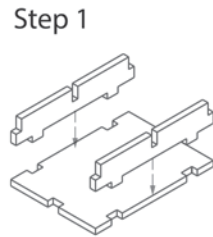
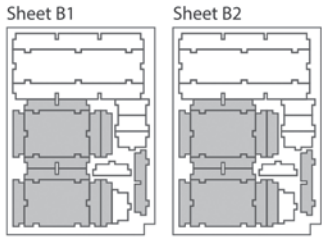
**Tray 3b**



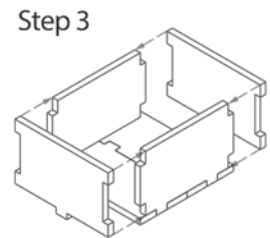
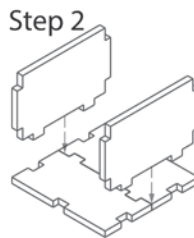
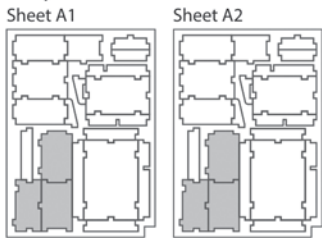
**Tray 4a & 4b** (the trays are identical)



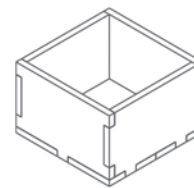
**Tray 5a, 5b, 5c & 5d** (the trays are identical)



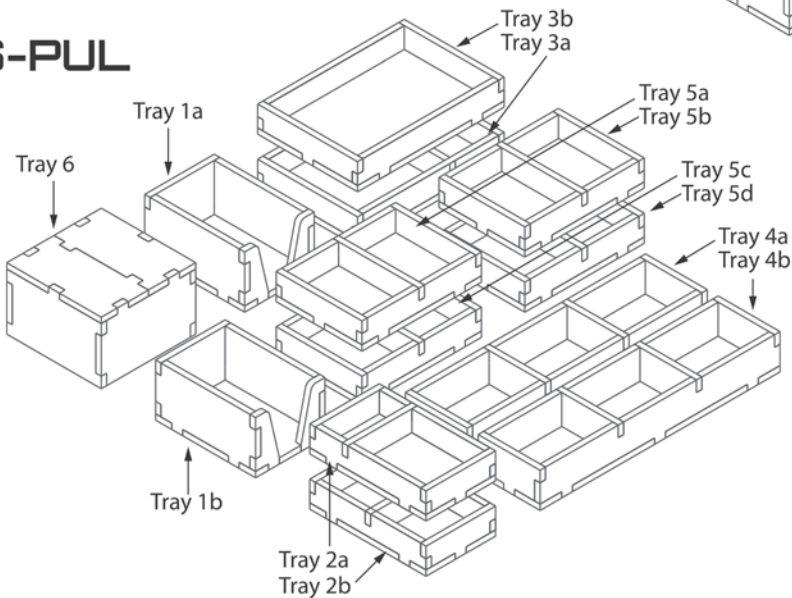
**Tray 6a**



Finished tray



**FS-PUL**



Please check [www.foldedspace.net](http://www.foldedspace.net) for photos of this insert in use.

**Tray legend:**

- Tray 1a, b - transmitter tiles
- Tray 2a - dice
- Tray 2b - modifier tokens
- Tray 3a - constructions awards, exploration bonuses
- Tray 3b - planetary system tiles
- Tray 4a - engineering cubes, four cube tokens, other markers
- Tray 4b - gyrodyne tiles
- Tray 5a, b, c, d - player pieces
- Tray 6 - filler tray (used inverted)