

Assembly Instructions

The package contains 6 sheets - 2 identical sheets plus 4 other identical sheets.

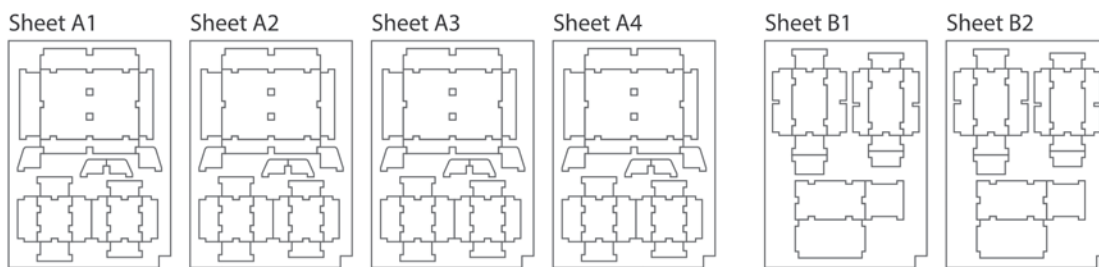
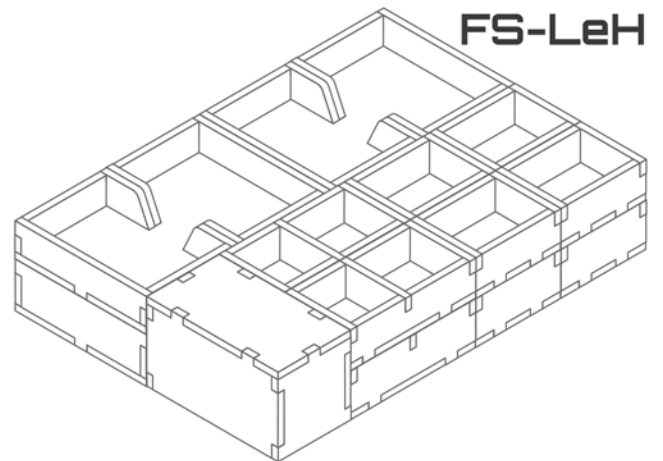
Most trays are either doubled or quadrupled.

After assembly the trays are put in two layers in the original game box.

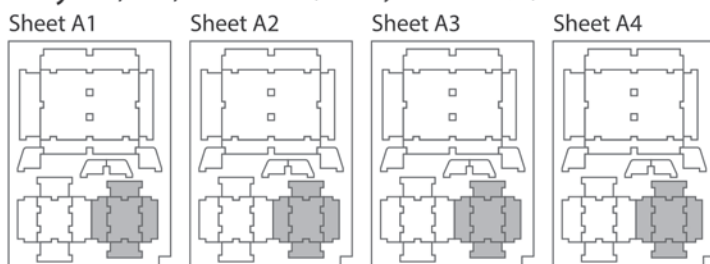
Ordinary PVA glue is required when assembling each tray.

Please make sure you dry-assemble each tray correctly before gluing it together.

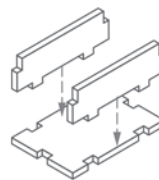
Please check www.foldedspace.net for general assembly tips.



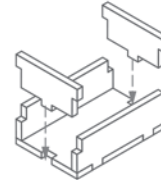
Tray 1a, 1b, 1c & 1d (the trays are identical)



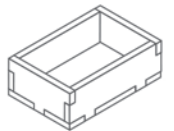
Step 1



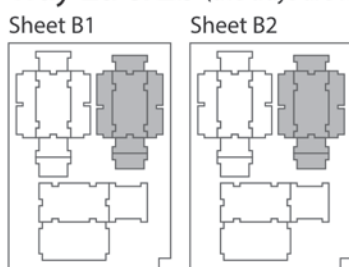
Step 2



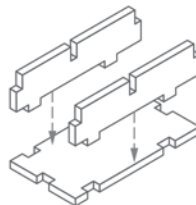
Finished tray



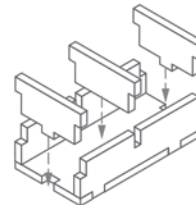
Tray 2a & 2b (the trays are identical)



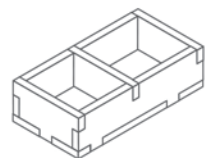
Step 1



Step 2

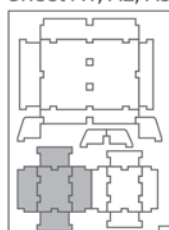


Finished tray



Tray 3a, 3b, 3c & 3d (the trays are identical)

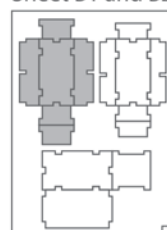
Sheet A1, A2, A3 and A4



To assemble
repeat steps
for Tray 1.

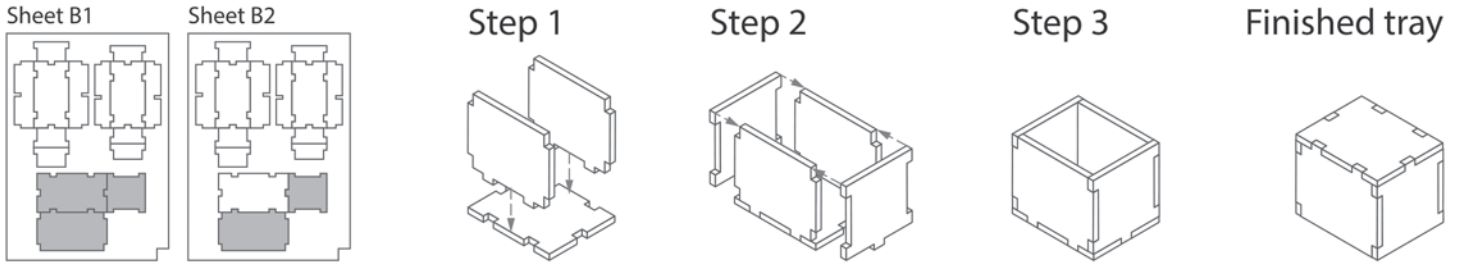
Tray 4a & 4b (the trays are identical)

Sheet B1 and B2

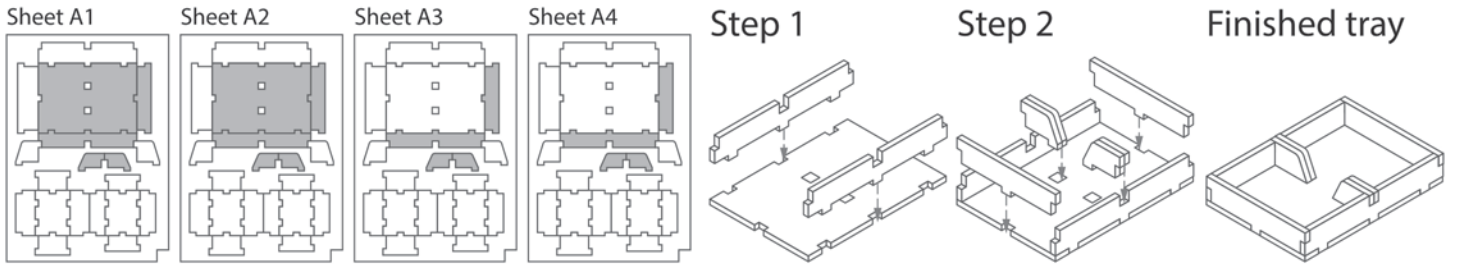


To assemble
repeat steps
for Tray 2.

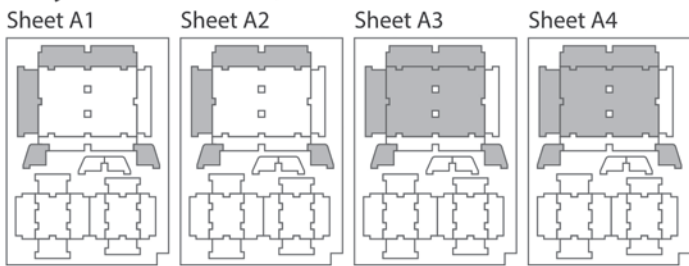
Tray 5



Tray 6a & 6b (the trays are identical)



Tray 7a & 7b (the trays are identical)



To assemble repeat steps for Tray 6.

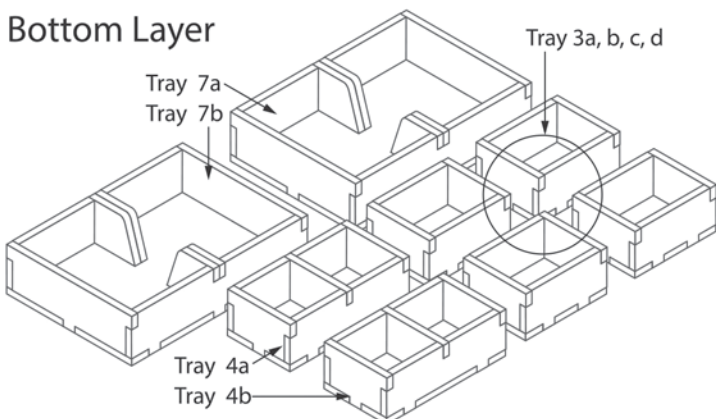
FS-LeH

Tray legend:

- | | |
|-------------------------|--|
| Tray 1a - Coal Tokens | Tray 4a - Player Tokens & Supply Tiles |
| Tray 1b - Fish Tokens | Tray 4b - Food Production & First Player Tokens |
| Tray 1c - Hide Tokens | Tray 5 - Filler Tray |
| Tray 1d - Iron Tokens | Tray 6a - Le Grand Hameau & Special Building Cards |
| Tray 2a - Coins | Tray 6b - Building & Ship Cards |
| Tray 2b - Coins | Tray 7a - Starting Building & Round Overview Cards |
| Tray 3a - Cattle Tokens | Tray 7b - Game Turn & Loan Cards |
| Tray 3b - Grain Tokens | |
| Tray 3c - Clay Tokens | |
| Tray 3d - Wood Tokens | |

Please check www.foldedspace.net for photos of this insert in use.

Bottom Layer



Top Layer

