

FS-GWTv2 insert
compatible with Great Western Trail®,
incl. Rails to the North® expansion.



Assembly Instructions

The package contains 6 sheets, two identical sheets plus four other identical sheets.

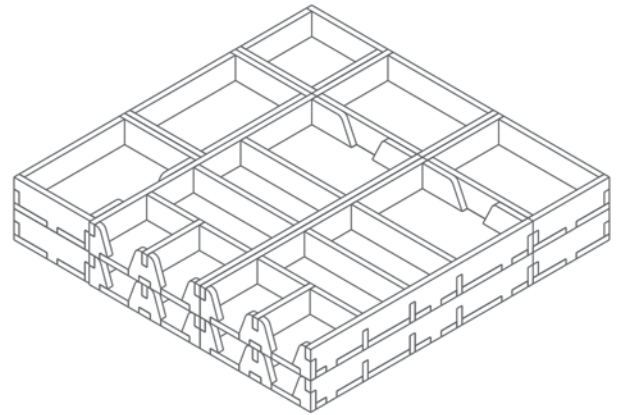
After assembly the trays are put in two layers in the original game box.

Ordinary PVA glue is required when assembling each tray.

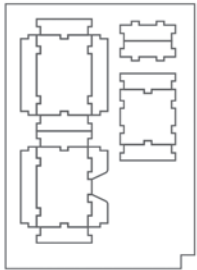
Please make sure you dry-assemble each tray correctly before gluing it together.

Please check www.foldedspace.net for general assembly tips.

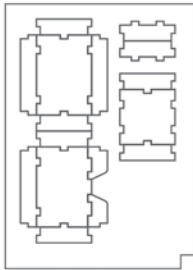
FS-GWTv2



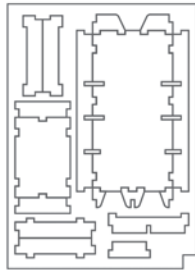
Sheet A1



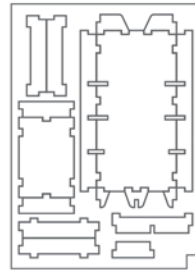
Sheet A2



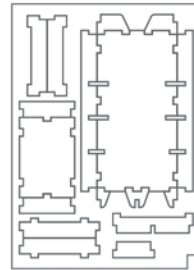
Sheet B1



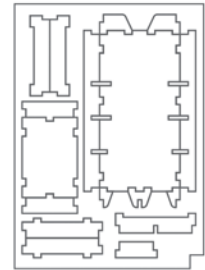
Sheet B2



Sheet B3

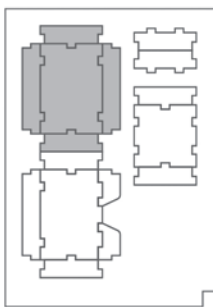


Sheet B4

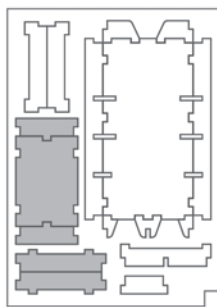


Tray 1a, 1b, 1c, 1d, 1e & 1f (the trays are identical)

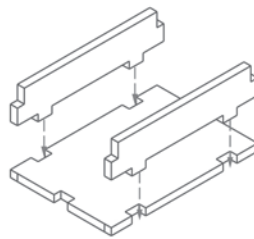
Sheet A1, A2



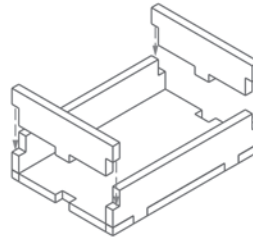
Sheet B1, B2, B3, B4



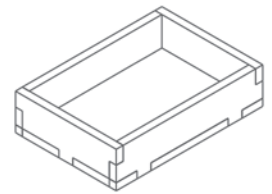
Step 1



Step 2

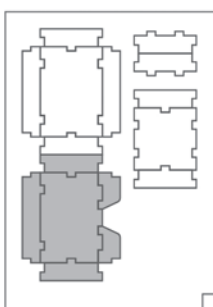


Finished tray

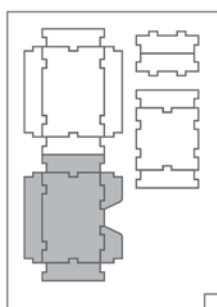


Tray 2a & 2b (the trays are identical)

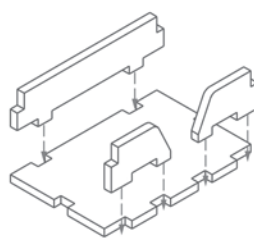
Sheet A1



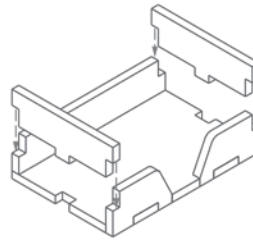
Sheet A2



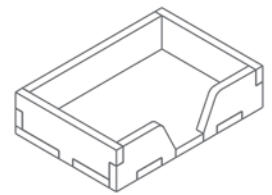
Step 1



Step 2



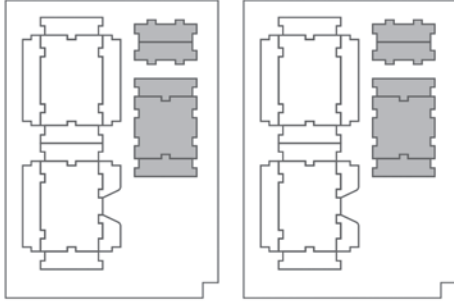
Finished tray



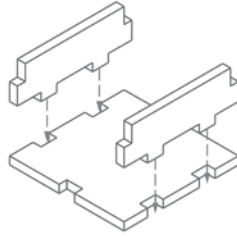
Tray 3a & 3b (the trays are identical)

Sheet A1

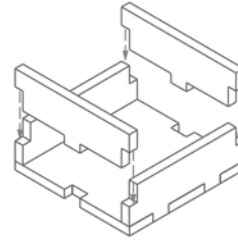
Sheet A2



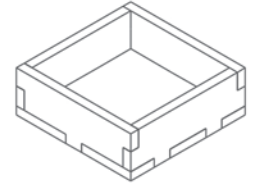
Step 1



Step 2

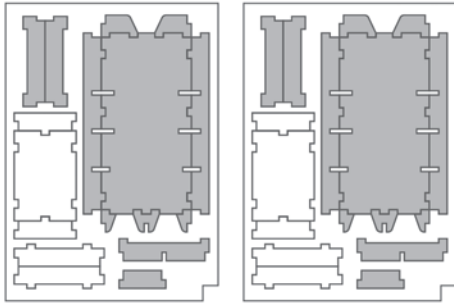


Finished tray

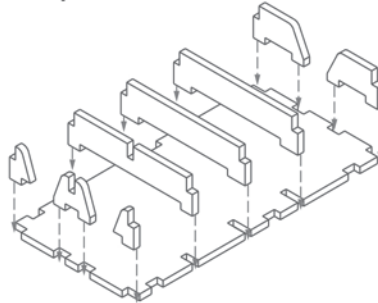


Tray 4a, 4b, 4c & 4d (the trays are identical)

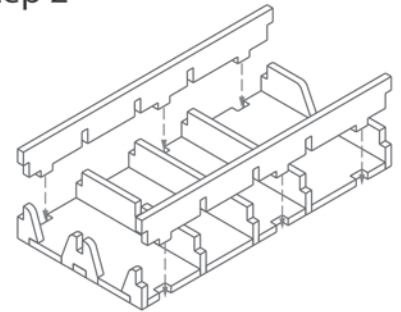
Sheet B1, B2, B3, B4



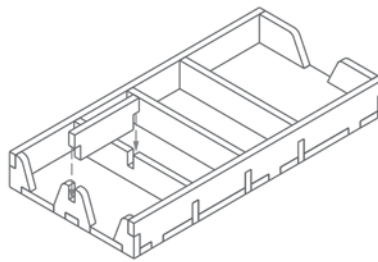
Step 1



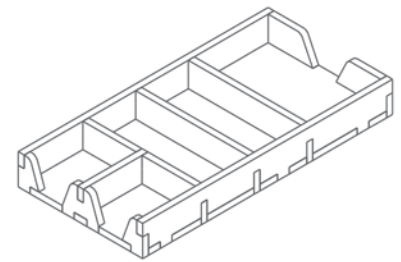
Step 2



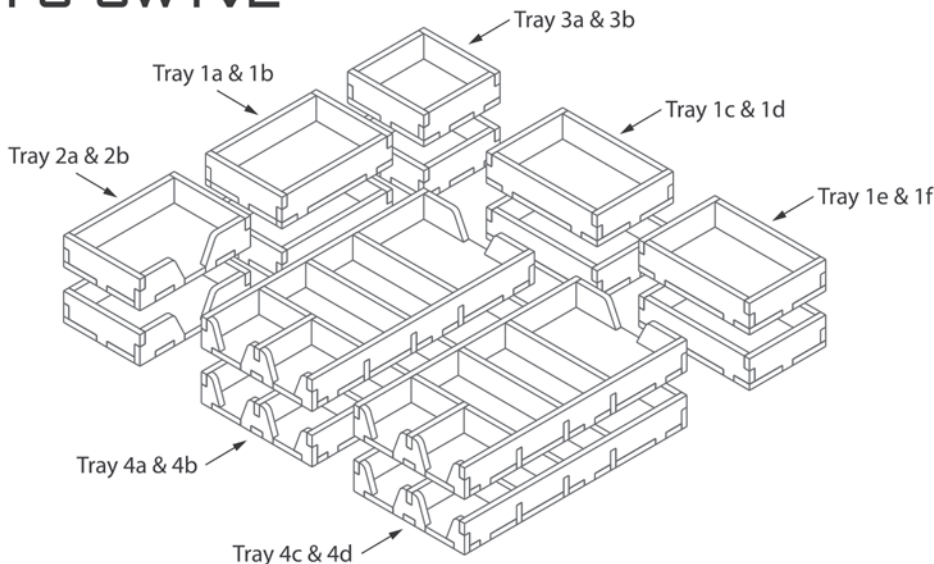
Step 3



Finished tray



FS-GWTv2



Please check www.foldedspace.net for photos of this insert in use.

Tray legend:

- Tray 1a - worker, hazard, teepee tiles 1
- Tray 1b - worker, hazard, teepee tiles 2
- Tray 1c - worker, hazard, teepee tiles 3
- Tray 1d - coins
- Tray 1e - station master tiles
- Tray 1f - exchange tokens
- Tray 2a - market cattle cards
- Tray 2b - objective cards
- Tray 3a - neutral building tiles
- Tray 3b - medium town tiles
- Tray 4a, b, c, d - Player pieces and cards