

FS-TZO insert
compatible with Tzolkin®,
incl. Tribes & Prophecies® expansion

Assembly Instructions

Notes:

The package contains 4 sheets, two of them are identical to the other two.

Each tray is either doubled or quadrupled.

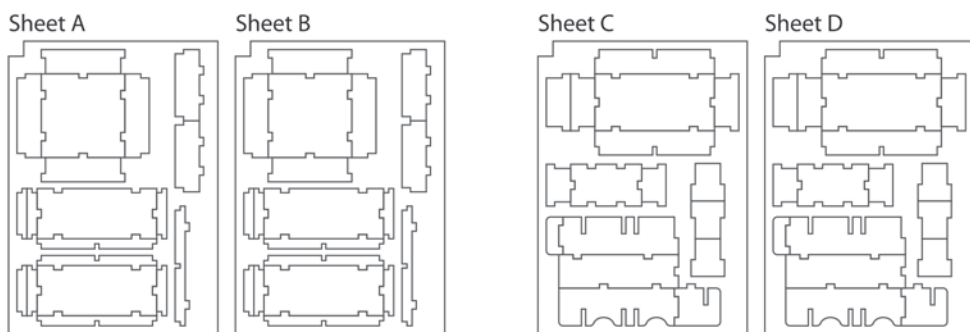
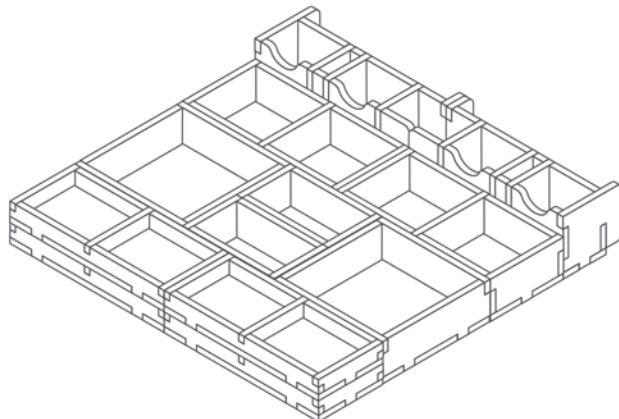
After assembly the trays are put in two layers in the original game box.

Ordinary PVA glue is required when assembling each tray, for extra strength.

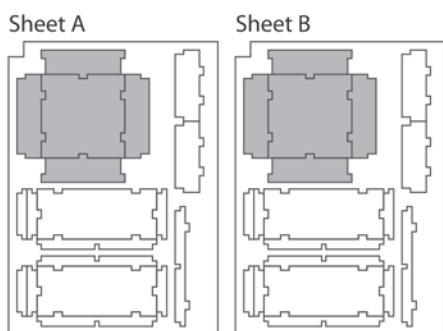
Please make sure you dry-assemble each tray correctly before gluing it together.

Please check www.foldedspace.net for general assembly tips.

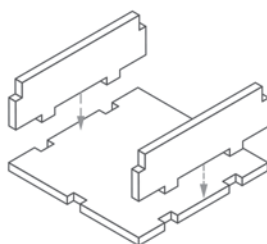
FS-TZO



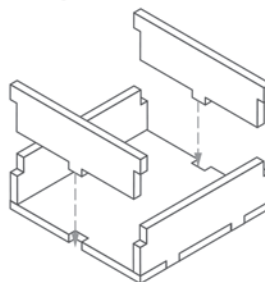
Tray 1a & 1b (the trays are identical)



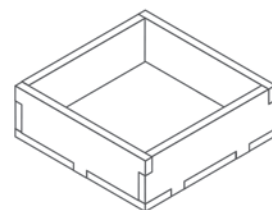
Step 1



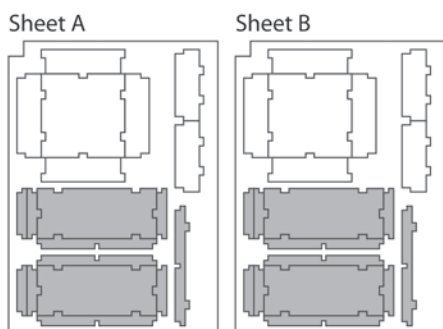
Step 2



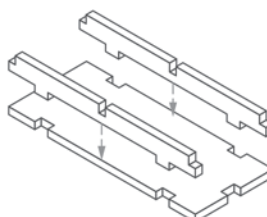
Finished tray



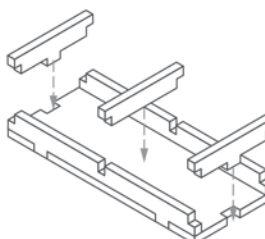
Tray 2a, 2b, 2c & 2d (the trays are identical)



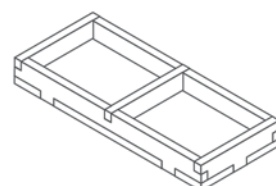
Step 1



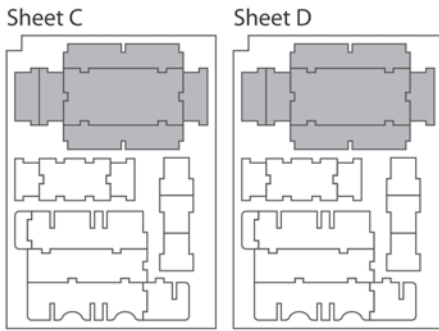
Step 2



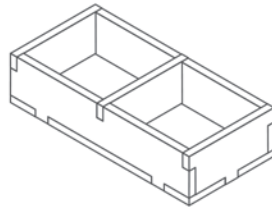
Finished tray



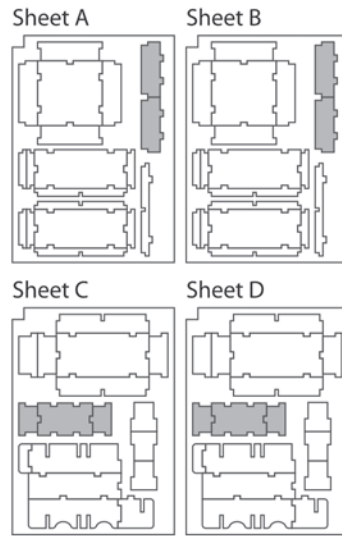
Tray 3a & 3b (the trays are identical)



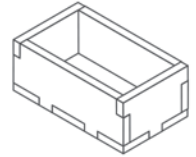
To assemble repeat steps for Tray 2.



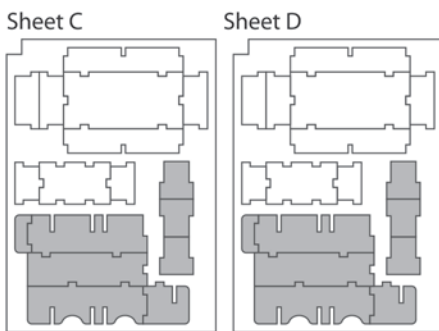
Tray 4a & 4b (the trays are identical)



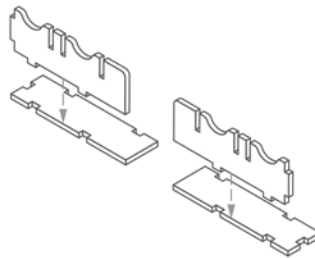
To assemble repeat steps for Tray 1.



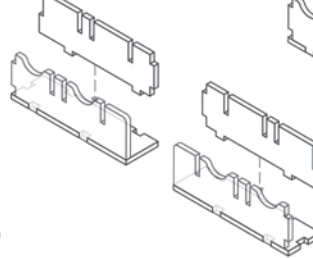
Tray 5a & 5b (the trays are reversed)



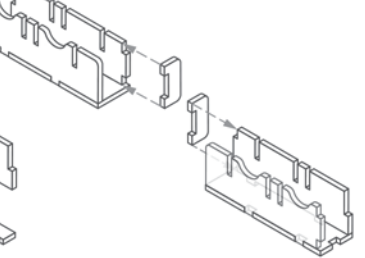
Step 1



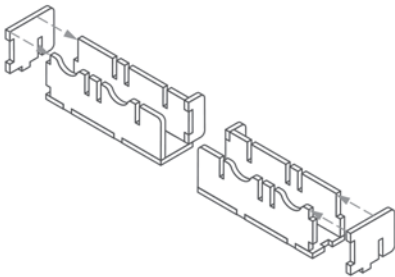
Step 2



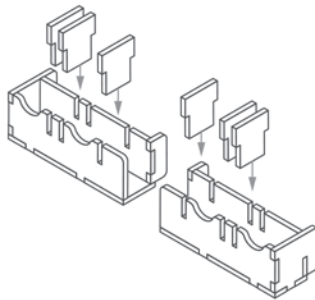
Step 3



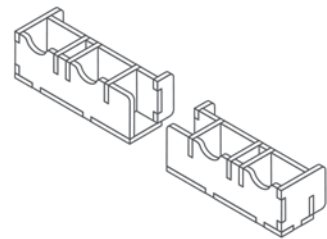
Step 4



Step 5

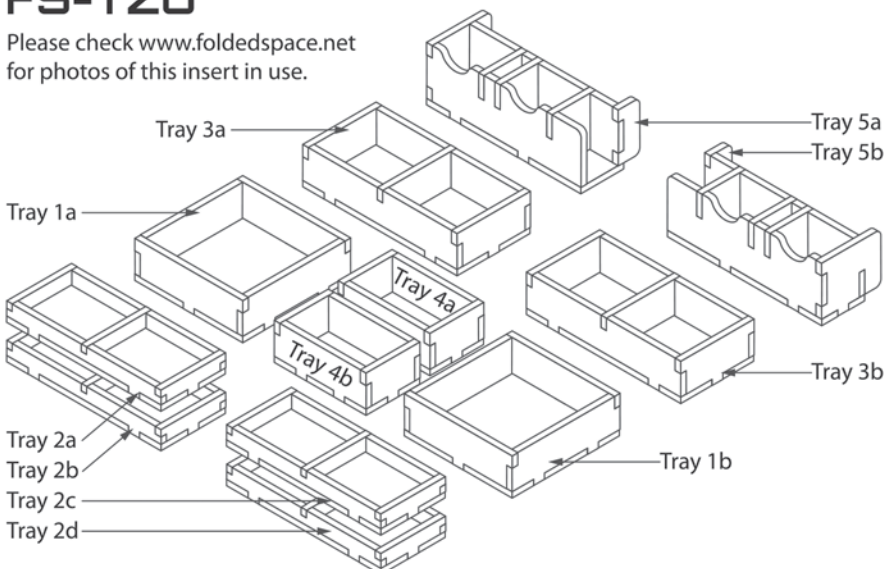


Finished trays



FS-TZO

Please check www.foldedspace.net for photos of this insert in use.



Tray legend:

- Tray 1a - corn tokens
- Tray 1b - wealth tiles
- Tray 2a - wood, corn harvest
- Tray 2b - player pieces
- Tray 2c - skulls, player pieces
- Tray 2d - player pieces
- Tray 3a - wood, stone
- Tray 3b - gold
- Tray 4a - quick action tiles
- Tray 4b - quick action tiles
- Tray 5a - buildings, monuments, prophecies, tribes
- Tray 5b - buildings, monuments, prophecies, tribes

Note: Rule books are placed on top of trays 1-4. Board tiles go on top of the rules, smallest at the bottom.