

FS-FPO insert compatible with Flash Point[®],



incl. the Extreme Danger[®], 2nd Story[®], Dangerous Waters[®] and other expansions

Assembly Instructions

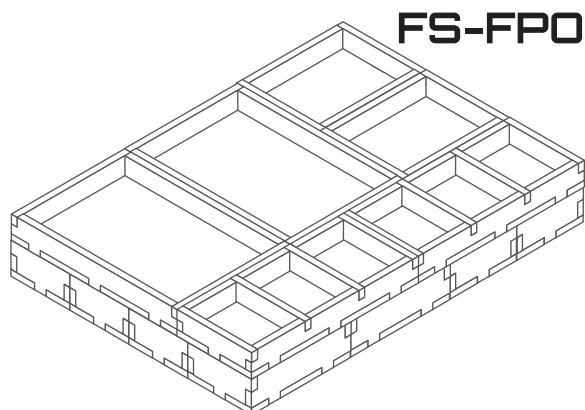
The package contains 4 sheets, two of them are identical to the other two.

After assembly the trays are put in two layers in the original game box.

Ordinary PVA glue is required when assembling each tray, for extra strength.

Please make sure you dry-assemble each tray correctly before gluing it together.

Please check www.foldedspace.net for general assembly tips.

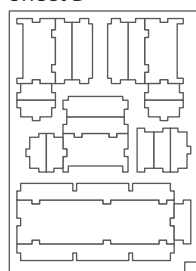
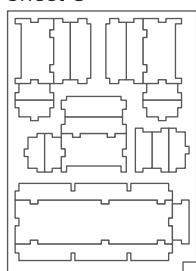
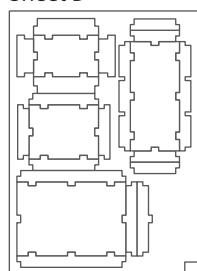
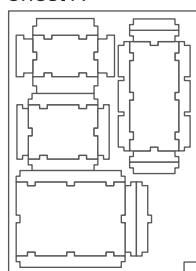


Sheet A

Sheet B

Sheet C

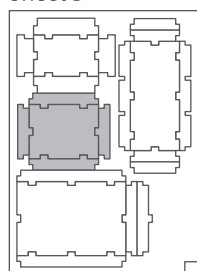
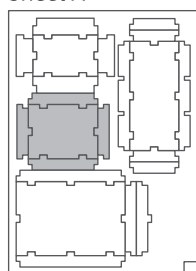
Sheet D



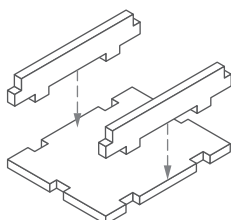
Tray 1a & 1b (the trays are identical)

Sheet A

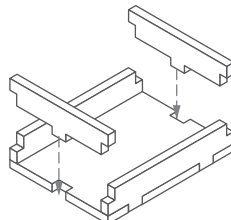
Sheet B



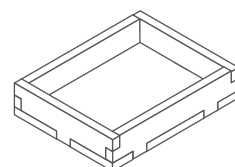
Step 1



Step 2



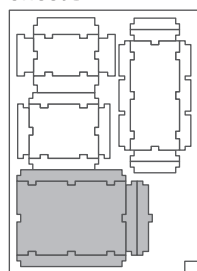
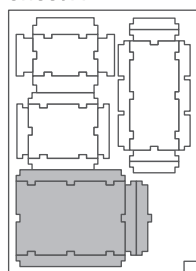
Finished tray



Tray 2a & 2b (the trays are identical)

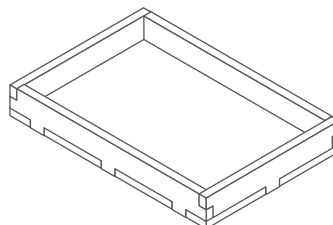
Sheet A

Sheet B



To assemble
repeat steps
for Tray 1.

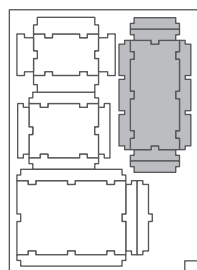
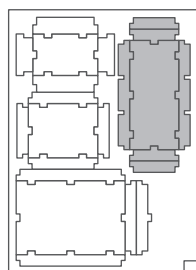
Finished tray



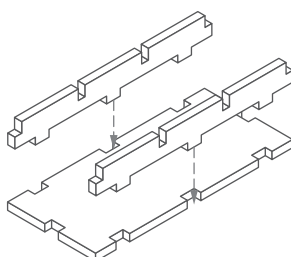
Tray 3a & 3b (the trays are identical)

Sheet A

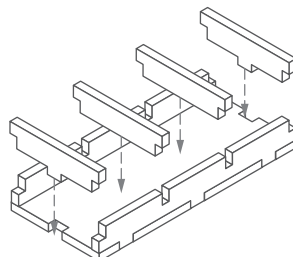
Sheet B



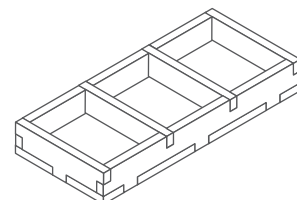
Step 1



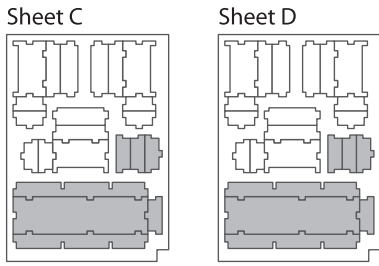
Step 2



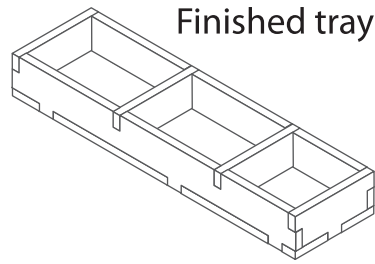
Finished tray



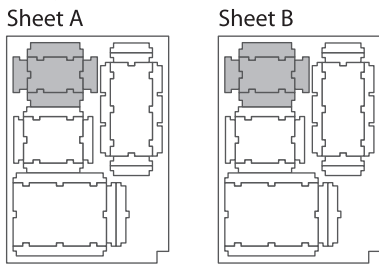
Tray 4a & 4b (the trays are identical)



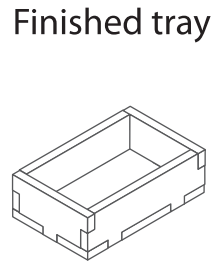
To assemble
repeat steps
for Tray 3.



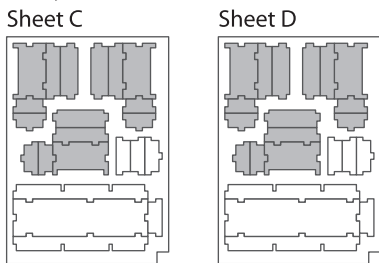
Tray 5a & 5b (the trays are identical)



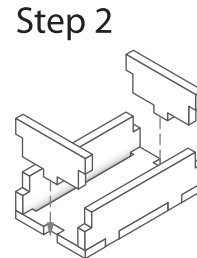
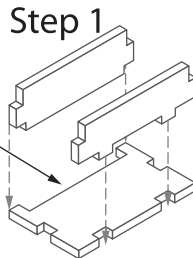
To assemble
repeat steps
for Tray 1.



Tray 6a, 6b, 6c, 6d, 6e & 6f (the trays are identical)

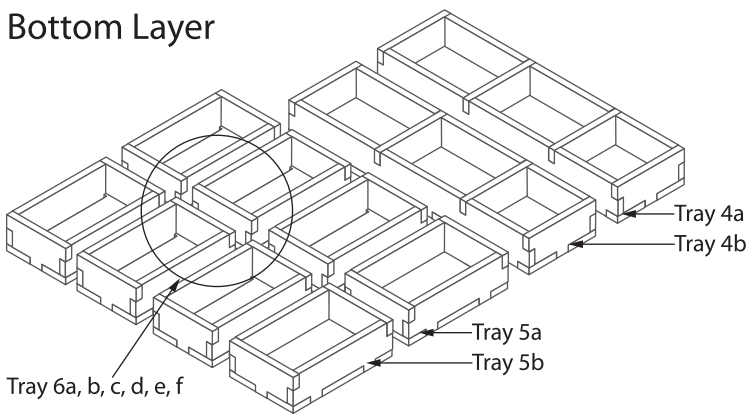


Note the gap between
the side wall and the
base. The gap is meant
to fit the bases of the
firefighter miniatures.

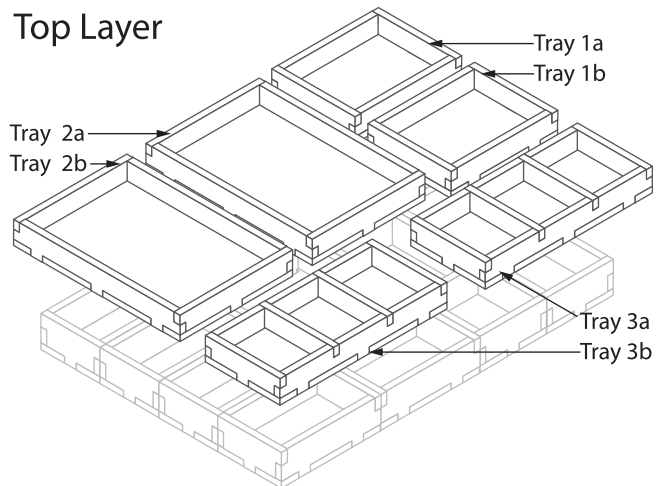


FS-FPO

Bottom Layer



Top Layer



Tray legend:

- Tray 1a - damage counters
- Tray 1b - vehicles
- Tray 2a - threat markers
- Tray 2b - game cards
- Tray 3a - game tokens
- Tray 3b - game tokens and dice
- Tray 4a, b - game tokens
- Tray 5a - door markers
- Tray 5b - coloured bases
- Tray 6a, b, c, d, e, f - firefighters

Note: The insert is designed to hold the game components only. The game boards should be stored separately in the Extreme Danger® expansion box.

Please check www.foldedspace.net for photos of this insert in use.

Tip: Keep the instructions in the bottom of your board game box as a reminder of how the insert fits together.